

MLH1 Rabbit mAb

货号: **AYM29720**

产品信息

反应	Human,Mouse,Rat
宿主	Rabbit
克隆性	Monoclonal
预测反应	
应用	WB IHC IF/ICC IP FC
推荐浓度	WB: 1:500 - 1:2000 IHC: 1:50 - 1:200 IF/ICC: 1:50 - 1:200 IP: 1:20 - 1:50 FC: 1:20 - 1:50
理论分子量	85kDa
实测分子量	85kDa
形式	Liquid
保存条件	Store at -20°C. Avoid freeze / thaw cycles. Buffer: PBS with 0.75% BSA,50% glycerol,pH7.3.
偶联物	Unconjugated
阳性对照	Jurkat,Mouse thymus,HeLa,mouse brain
细胞定位	Nucleus
纯化	Affinity purification

抗原信息

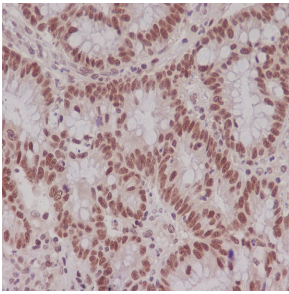
抗原信息	Recombinant fusion protein corresponding to Human MLH1.
序列	PGLAGPSGEMVKSTTSLTSSSTSGSSDKVYAHQMVRTDSREQKLD AFLQPLSKPLSSQPQAIVTEDKTDISSGRARQQDE EMLELPAPAEVAAKNQSLEGD

靶点信息

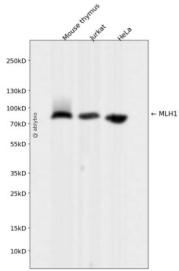
研究背景	This gene was identified as a locus frequently mutated in hereditary nonpolyposis colon cancer (HNPCC). It is a human homolog of the E. coli DNA mismatch repair gene mutL, consistent with the characteristic alterations in microsatellite sequences (RER+phenotype) found in HNPCC. Alternative splicing results in multiple transcript variants encoding distinct isoforms. Additional transcript variants have been described, but their full-length natures have not been determined.[provided by RefSeq, Nov 2009]
------	---

基因ID	4292
基因名	MLH1
Swiss	P40692
别名	COCA2; FCC2; HNPCC; HNPCC2; hMLH1

产品验证



Immunohistochemical analysis of paraffin-embedded human colon, using MLH1 Antibody.



Western blot analysis of MLH1 expressed in Mouse thymus, Jurkat, HeLa using MLH1 Rabbit mAb at 1:1000. Secondary antibody: HRP Goat Anti-Rabbit IgG (H+L) at 1:5000. Lysates/proteins: 30 ug per lane. Blocking buffer: 5% non-fat dry milk in TBST. Detection: ECL Enhanced Kit. Exposure time: 120s.

实验步骤

访问官网浏览详情: www.ablybio.cn