

Collagen XVII Rabbit mAb

货号: **AYM29703**

产品信息

反应	Human,Mouse,Rat
宿主	Rabbit
克隆性	Monoclonal
预测反应	
应用	WB IHC IF/ICC IP
推荐浓度	WB: 1:500 - 1:2000 IHC: 1:50 - 1:200 IF/ICC: 1:50 - 1:200 IP: 1:20 - 1:50
理论分子量	130,180kDa
实测分子量	130,180kDa
形式	Liquid
保存条件	Store at -20°C. Avoid freeze / thaw cycles. Buffer: PBS with 0.75% BSA,50% glycerol,pH7.3.
偶联物	Unconjugated
阳性对照	A-431
细胞定位	Cell junction,Membrane,Secreted,Single-pass type II membrane protein,basement membrane,extracellular matrix,extracellular space,hemidesmosome
纯化	Affinity purification

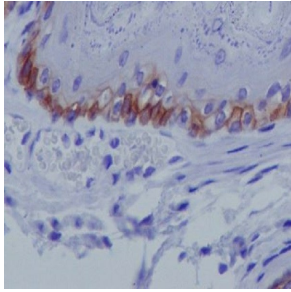
抗原信息

抗原信息	Recombinant fusion protein corresponding to Human Collagen XVII.
序列	SVRRGSSYSSSMSTGGGGAGSLGAGGAFGEAAGDRGPYGTDIGPGGGYGAAAEGGMYAGNGLLGADFAGDLDYNE LAVRVSESMQRQGLLQGMAYTVQGP

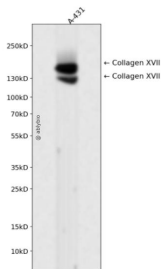
靶点信息

研究背景	This gene encodes the alpha chain of type XVII collagen. Unlike most collagens, collagen XVII is a transmembrane protein. Collagen XVII is a structural component of hemidesmosomes, multiprotein complexes at the dermal-epidermal basement membrane zone that mediate adhesion of keratinocytes to the underlying membrane. Mutations in this gene are associated with both generalized atrophic benign and junctional epidermolysis bullosa. Two homotrimeric forms of type XVII collagen exist. The full length form is the transmembrane protein. A soluble form, referred to as either ectodomain or LAD-1, is generated by proteolytic processing of the full length form. [provided by RefSeq, Jul 2008]
基因ID	1308
基因名	COL17A1
Swiss	Q9UMD9
别名	BA16H23.2; BP180; BPA-2; BPAG2; ERED; LAD-1

产品验证



Immunohistochemical analysis of paraffin-embedded mouse skin, using Collagen XVII Antibody.



Western blot analysis of Collagen XVII expressed in A-431 using Collagen XVII Rabbit mAb at 1:1000. Secondary antibody: HRP Goat Anti-Rabbit IgG (H+L) at 1:5000. Lysates/proteins: 30ug per lane. Blocking buffer: 5% non-fat dry milk in TBST. Detection: ECL Enhanced Kit. Exposure time: 120s.

实验步骤

访问官网浏览详情: www.ablybio.cn