

Phospho-IRE1 (S724) Rabbit mAb

货号: **AYM29702**

产品信息

反应	Human
宿主	Rabbit
克隆性	Monoclonal
预测反应	
应用	WB
推荐浓度	WB: 1:500 - 1:2000
理论分子量	110kDa
实测分子量	110kDa
形式	Liquid
保存条件	Store at -20°C. Avoid freeze / thaw cycles. Buffer: PBS with 0.75% BSA,50% glycerol,pH7.3.
偶联物	Unconjugated
阳性对照	293T,LNCaP,SK-N-SH,C2C12,Mouse thymus,Rat brain
细胞定位	Endoplasmic reticulum membrane,Single-pass type I membrane protein
纯化	Affinity purification

抗原信息

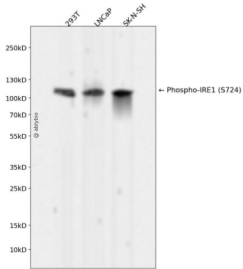
抗原信息	Recombinant fusion protein corresponding to Human Phospho-IRE1 (S724).
序列	VGKYSTSLYASPSMVHEGVAVVPRGSTLPLLEGPQTDGVTIGDKGECVITPSTDVKFDPGLKSKNKLNYLRNYWLLIGHHE TPLSASTKMLERFPNNLPKHRENVIPADSEKKSFEVINLVDQTSENAPTTVSRDVEEKPAHAPARPEA

靶点信息

研究背景	The protein encoded by this gene is the ER to nucleus signalling 1 protein, a human homologue of the yeast Ire1 gene product. This protein possesses intrinsic kinase activity and an endoribonuclease activity and it is important in altering gene expression as a response to endoplasmic reticulum-based stress signals.
基因ID	2081
基因名	ERN1

Swiss	O75460
别名	ERN1;IRE1;IRE1P;IRE1a;hIRE1p

产品验证



Western blot analysis of Phospho-IRE1 (S724) expressed in 293T,LNCaP,SK-N-SH using Phospho-IRE1 (S724) Rabbit mAb at 1:1000. Secondary antibody: HRP Goat Anti-Rabbit IgG (H+L) at 1:5000. Lysates/proteins: 30ug per lane. Blocking buffer: 5% non-fat dry milk in TBST. Detection: ECL Enhanced Kit. Exposure time: 120s.

实验步骤

访问官网浏览详情: www.ablybio.cn