

Cortactin Rabbit mAb

货号: **AYM29690**

产品信息

反应	Human,Mouse,Rat
宿主	Rabbit
克隆性	Monoclonal
预测反应	
应用	WB IHC IF/ICC IP FC
推荐浓度	WB: 1:500 - 1:2000 IHC: 1:50 - 1:200 IF/ICC: 1:50 - 1:200 IP: 1:20 - 1:50 FC: 1:20 - 1:50
理论分子量	80kDa
实测分子量	80kDa
形式	Liquid
保存条件	Store at -20°C. Avoid freeze / thaw cycles. Buffer: PBS with 0.75% BSA,50% glycerol,pH7.3.
偶联物	Unconjugated
阳性对照	HeLa,293T,HUVEC,Mouse lung
细胞定位	Cell junction,Cell membrane,Cell projection,Cytoplasm,Cytoplasmic side,Membrane,Peripheral membrane protein,cell cortex,clathrin-coated pit,cytoskeleton,dendrite,dendritic spine,focal adhesion,lamellipodium,podosome,ruffle
纯化	Affinity purification

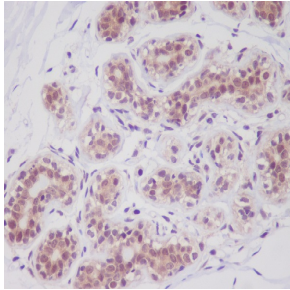
抗原信息

抗原信息	Recombinant fusion protein corresponding to Human Cortactin.
序列	MWKASAGHAVSIAQDDAGADDWETPDFVNDVSEKEQRWGAKTVQSGHQEHINIKLRENVFQEHQTLKEKELETG PKASHGYGGKFGVEQDRMDKSAV

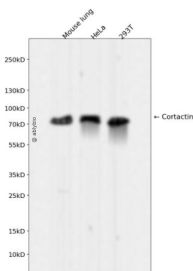
靶点信息

研究背景	This gene is overexpressed in breast cancer and squamous cell carcinomas of the head and neck. The encoded protein is localized in the cytoplasm and in areas of the cell-substratum contacts. This gene has two roles: (1) regulating the interactions between components of adherens-type junctions and (2) organizing the cytoskeleton and cell adhesion structures of epithelia and carcinoma cells. During apoptosis, the encoded protein is degraded in a caspase-dependent manner. The aberrant regulation of this gene contributes to tumor cell invasion and metastasis. Three splice variants that encode different isoforms have been identified for this gene. [provided by RefSeq, May 2010]
基因ID	2017
基因名	CTTN
Swiss	Q14247
别名	EMS1

产品验证



Immunohistochemical analysis of paraffin-embedded human breast cancer, using Cortactin Antibody.



Western blot analysis of Cortactin expressed in Mouse lung, HeLa, 293T using Cortactin Rabbit mAb at 1:1000. Secondary antibody: HRP Goat Anti-Rabbit IgG (H+L) at 1:5000. Lysates/proteins: 30ug per lane. Blocking buffer: 5% non-fat dry milk in TBST. Detection: ECL Enhanced Kit. Exposure time: 120s.

实验步骤

访问官网浏览详情: www.ablybio.cn