

GC1q R Rabbit mAb

货号: **AYM29686**

产品信息

反应	Human,Mouse,Rat
宿主	Rabbit
克隆性	Monoclonal
预测反应	
应用	WB IHC
推荐浓度	WB: 1:500 - 1:2000 IHC: 1:50 - 1:200
理论分子量	31kDa
实测分子量	31kDa
形式	Liquid
保存条件	Store at -20°C. Avoid freeze / thaw cycles. Buffer: PBS with 0.75% BSA,50% glycerol,pH7.3.
偶联物	Unconjugated
阳性对照	HeLa,HCT116,SW620,293T,C2C12,Mouse ovary,Mouse pancreas,Rat brain,Rat heart
细胞定位	Cell membrane,Cytoplasm,Extracellular side,Mitochondrion matrix,Nucleus,Peripheral membrane protein, Secreted,nucleolus
纯化	Affinity purification

抗原信息

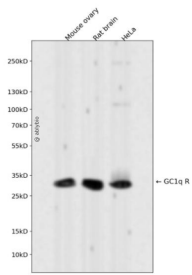
抗原信息	Recombinant fusion protein corresponding to Human GC1q R.
序列	KTLPKMSGGWELELNGTEAKLVRKVAGEKITVTFNINNSIPPTFDGEEEPSQGQKVEEQPELTSTPNFVVEVIKNDGKKA LVLDCHYPEDEVGQEDEAE

靶点信息

研究背景	The human complement subcomponent C1q associates with C1r and C1s in order to yield the first component of the serum complement system. The protein encoded by this gene is known to bind to the globular heads of C1q molecules and inhibit C1 activation. This protein has also been identified as the p32 subunit of pre-mRNA splicing factor SF2, as well as a hyaluronic acid-binding protein. [provided by RefSeq, Jul 20 08]
------	---

基因ID	708
基因名	C1QBP
Swiss	Q07021
别名	GC1QBP; HABP1; SF2p32; gC1Q-R; gC1qR; p32

产品验证



Western blot analysis of GC1q R expressed in Mouse ovary, Rat brain, HeLa using GC1q R Rabbit mAb at 1:1000. Secondary antibody: HRP Goat Anti-Rabbit IgG (H+L) at 1:5000. Lysates/proteins: 30ug per lane. Blocking buffer: 5% non-fat dry milk in TBST. Detection: ECL Enhanced Kit. Exposure time: 120s.

实验步骤

访问官网浏览详情: www.ablybio.cn