

MAGE 1 Rabbit mAb

货号: **AYM29674**

产品信息

反应	Human,Mouse,Rat
宿主	Rabbit
克隆性	Monoclonal
预测反应	
应用	WB IF/ICC FC
推荐浓度	WB: 1:500 - 1:2000 IF/ICC: 1:50 - 1:200 FC: 1:20 - 1:50
理论分子量	34kDa
实测分子量	46kDa
形式	Liquid
保存条件	Store at -20°C. Avoid freeze / thaw cycles. Buffer: PBS with 0.75% BSA,50% glycerol,pH7.3.
偶联物	Unconjugated
阳性对照	22Rv1
细胞定位	Cytoplasm,Nucleus
纯化	Affinity purification

抗原信息

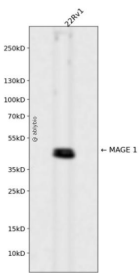
抗原信息	Recombinant fusion protein corresponding to Human MAGE 1.
序列	MSLEQRS LHCKPEEAL EAQQEALGLVCVQAATSSSSPLVLGTLEEVPTAGSTDPQPQSGASAFPTTINFTRQRQPSEGSS SREEEGPSTSCILESLFRAVITKKVADLVGFLLKLRAREPVTKAEMLESVIKNYKHFPEIFGKASESLQLVFGIDVKEADPT GHSYVLVTCLGLSYDGLLDGNQIMPKTGFLIIVLMIAMEGGHAPPEEEIWEELSVMEVYDGREHSAYGEPKLLTQDLVQE KYLEYRQVPDSDPARYEFLWGPRLAETS YVKVLEYVIKVSARV RFFPSLREAALREEEEGV

靶点信息

研究背景	This gene is a member of the MAGEA gene family. The members of this family encode proteins with 50 to 80% sequence identity to each other. The promoters and first exons of the MAGEA genes show considerable variability, suggesting that the existence of this gene family enables the same function to be expressed under different transcriptional controls. The MAGEA genes are clustered at chromosomal location Xq28. They have been implicated in some hereditary disorders, such as dyskeratosis congenita.
------	--

基因ID	4100
基因名	MAGEA1
Swiss	P43355
别名	MAGEA1;CT1.1;MAGE1

产品验证



Western blot analysis of MAGE 1 expressed in 22Rv1 using MAGE 1 Rabbit mAb at 1:1000. Secondary anti body: HRP Goat Anti-Rabbit IgG (H+L) at 1:5000. Lysates/proteins: 30ug per lane. Blocking buffer: 5% no n-fat dry milk in TBST. Detection: ECL Enhanced Kit. Exposure time: 120s.

实验步骤

访问官网浏览详情: www.ablybio.cn