

MEK2 Rabbit mAb

货号: **AYM29672**

产品信息

| | |
|-------|--|
| 反应 | Human,Mouse |
| 宿主 | Rabbit |
| 克隆性 | Monoclonal |
| 预测反应 | |
| 应用 | WB IHC IF/ICC IP FC |
| 推荐浓度 | WB: 1:500 - 1:2000 IHC: 1:50 - 1:200 IF/ICC: 1:50 - 1:200 IP: 1:20 - 1:50 FC: 1:20 - 1:50 |
| 理论分子量 | 44kDa |
| 实测分子量 | 44kDa |
| 形式 | Liquid |
| 保存条件 | Store at -20°C. Avoid freeze / thaw cycles. Buffer: PBS with 0.75% BSA,50% glycerol,pH7.3. |
| 偶联物 | Unconjugated |
| 阳性对照 | HeLa,293T,HT-29 |
| 细胞定位 | Cytoplasm,Membrane,Peripheral membrane protein |
| 纯化 | Affinity purification |

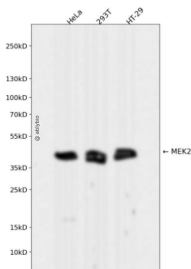
抗原信息

| | |
|------|--|
| 抗原信息 | Recombinant fusion protein corresponding to Human MEK2. |
| 序列 | MLARRKPVLPAITINPTIAEGPSPTSEGASEANLVDLQKKLEELDEQQKRLEAFLTQKAKVGELKDDDFERISELGAGN GGVTKVQHRPSGLIMAR |

靶点信息

| | |
|-------|--|
| 研究背景 | The protein encoded by this gene is a dual specificity protein kinase that belongs to the MAP kinase kinase family. This kinase is known to play a critical role in mitogen growth factor signal transduction. It phosphorylates and thus activates MAPK1/ERK2 and MAPK2/ERK3. The activation of this kinase itself is dependent on the Ser/Thr phosphorylation by MAP kinase kinase kinases. Mutations in this gene cause cardiofacio cutaneous syndrome (CFC syndrome), a disease characterized by heart defects, mental retardation, and distinctive facial features similar to those found in Noonan syndrome. The inhibition or degradation of this kinase is also found to be involved in the pathogenesis of Yersinia and anthrax. A pseudogene, which is located on chromosome 7, has been identified for this gene. |
| 基因ID | 5605 |
| 基因名 | MAP2K2 |
| Swiss | P36507 |
| 别名 | CFC4;MAPKK2;MEK2;MKK2;PRKMK2;MAP2K2 |

产品验证



Western blot analysis of MEK2 expressed in HeLa, 293T, HT-29 using MEK2 Rabbit mAb at 1:1000. Secondary antibody: HRP Goat Anti-Rabbit IgG (H+L) at 1:5000. Lysates/proteins: 30ug per lane. Blocking buffer: 5% non-fat dry milk in TBST. Detection: ECL Enhanced Kit. Exposure time: 120s.

实验步骤

访问官网浏览详情: www.ablybio.cn