

Bag1 Rabbit mAb

货号: **AYM29667**

产品信息

| | |
|-------|---|
| 反应 | Human,Mouse,Rat |
| 宿主 | Rabbit |
| 克隆性 | Monoclonal |
| 预测反应 | |
| 应用 | WB IHC IF/ICC |
| 推荐浓度 | WB: 1:500 - 1:2000 IHC: 1:50 - 1:200 IF/ICC: 1:50 - 1:200 |
| 理论分子量 | 25kDa/31kDa/34kDa/38kDa |
| 实测分子量 | 33,46,50kDa |
| 形式 | Liquid |
| 保存条件 | Store at -20°C. Avoid freeze / thaw cycles. Buffer: PBS with 0.75% BSA,50% glycerol,pH7.3. |
| 偶联物 | Unconjugated |
| 阳性对照 | HeLa,Jurkat,Mouse lung,Mouse testis,Rat testis |
| 细胞定位 | Cytoplasm,Cytoplasm,Nucleus |
| 纯化 | Affinity purification |

抗原信息

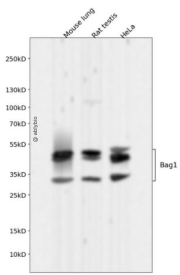
| | |
|------|---|
| 抗原信息 | Recombinant fusion protein corresponding to Human Bag1. |
| 序列 | WSEEATQSEEATQGEEMNRSQEVTRDEESTRSEEVTRREEMAAAGLTVTVTHSNEKHDLHVTSQQGSSEPVVQDLAQVV EEVIGVPQSFQKLIFKKGKSLKEM |

靶点信息

| | |
|------|---|
| 研究背景 | The oncogene BCL2 is a membrane protein that blocks a step in a pathway leading to apoptosis or programmed cell death. The protein encoded by this gene binds to BCL2 and is referred to as BCL2-associated thanogene. It enhances the anti-apoptotic effects of BCL2 and represents a link between growth factor receptors and anti-apoptotic mechanisms. Multiple protein isoforms are encoded by this mRNA through the use of a non-AUG (CUG) initiation codon, and three alternative downstream AUG initiation codons. A related pseudogene has been defined on chromosome X. |
|------|---|

| | |
|-------|----------------------|
| 基因ID | 573 |
| 基因名 | BAG1 |
| Swiss | Q99933 |
| 别名 | BAG1;BAG-1;HAP;RAP46 |

产品验证



Western blot analysis of Bag1 expressed in Mouse lung,Rat testis,HeLa using Bag1 Rabbit mAb at 1:100 0. Secondary antibody: HRP Goat Anti-Rabbit IgG (H+L) at 1:5000. Lysates/proteins: 30ug per lane. Blocking buffer: 5% non-fat dry milk in TBST. Detection: ECL Enhanced Kit. Exposure time: 120s.

实验步骤

访问官网浏览详情: www.ablybio.cn