

# STAT1 alpha Rabbit mAb

货号: **AYM29658**

## 产品信息

反应	Human
宿主	Rabbit
克隆性	Monoclonal
预测反应	
应用	WB IHC ICC IP FC
推荐浓度	<b>WB:</b> 1:500 - 1:2000 <b>IHC:</b> 1:50 - 1:200 <b>ICC:</b> 1:50 - 1:200 <b>IP:</b> 1:20 - 1:50 <b>FC:</b> 1:20 - 1:50
理论分子量	83kDa/87kDa
实测分子量	87kDa
形式	Liquid
保存条件	Store at -20°C. Avoid freeze / thaw cycles. Buffer: PBS with 0.75% BSA,50% glycerol,pH7.3.
偶联物	Unconjugated
阳性对照	HeLa,Mouse spleen,Rat spleen
细胞定位	Cytoplasm,Nucleus
纯化	Affinity purification

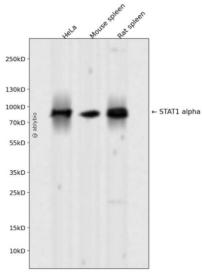
## 抗原信息

抗原信息	Recombinant fusion protein corresponding to Human STAT1 alpha.
序列	NYKVMAAENIPENPLKYLYPNIDKDHAFGKYYSRPKEAPEPEMELDGPKGTYIKTELISVSEVHPSRLQTTDNLPMSPPEEFD EVSRIVGSVEFDSMMNTV

## 靶点信息

研究背景	The protein encoded by this gene is a member of the STAT protein family. In response to cytokines and growth factors, STAT family members are phosphorylated by the receptor associated kinases, and then form homo- or heterodimers that translocate to the cell nucleus where they act as transcription activators. This protein can be activated by various ligands including interferon-alpha, interferon-gamma, EGF, PDGF and IL6. This protein mediates the expression of a variety of genes, which is thought to be important for cell viability in response to different cell stimuli and pathogens. Two alternatively spliced transcript variants encoding distinct isoforms have been described.
基因ID	6772
基因名	STAT1
Swiss	P42224
别名	CANDF7;IMD31A;IMD31B;IMD31C;ISGF-3;STAT91;STAT1 alpha;STAT1

## 产品验证



Western blot analysis of STAT1 alpha expressed in HeLa, Mouse spleen, Rat spleen using STAT1 alpha rabbit mAb at 1:1000. Secondary antibody: HRP Goat Anti-Rabbit IgG (H+L) at 1:5000. Lysates/proteins: 30ug per lane. Blocking buffer: 5% non-fat dry milk in TBST. Detection: ECL Enhanced Kit. Exposure time: 120s.

## 实验步骤

访问官网浏览详情: [www.ablybio.cn](http://www.ablybio.cn)