

# Ferritin Light Chain Rabbit mAb

货号: **AYM29656**

## 产品信息

反应	Human,Mouse,Rat
宿主	Rabbit
克隆性	Monoclonal
预测反应	
应用	WB IP FC
推荐浓度	<b>WB:</b> 1:500 - 1:2000 <b>IP:</b> 1:20 - 1:50 <b>FC:</b> 1:20 - 1:50
理论分子量	20kDa
实测分子量	20kDa
形式	Liquid
保存条件	Store at -20°C. Avoid freeze / thaw cycles. Buffer: PBS with 0.75% BSA,50% glycerol,pH7.3.
偶联物	Unconjugated
阳性对照	Mouse liver,Mouse spleen,Rat liver
细胞定位	cytoplasm,cytosol,extracellular exosome,extracellular region
纯化	Affinity purification

## 抗原信息

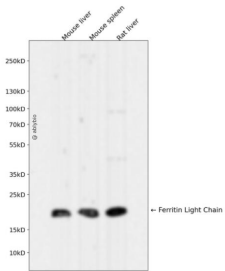
抗原信息	Recombinant fusion protein corresponding to Human Ferritin Light Chain.
序列	RALFQDIKKPAEDEWGKTPDAMKAAMALEKKNLQALLDLHALGSARTDPHLCDFLETHFLDEEVKLIKMGDHLTNLHRLGGPEAGLGEYLFERLTLKHD

## 靶点信息

研究背景	This gene encodes the light subunit of the ferritin protein. Ferritin is the major intracellular iron storage protein in prokaryotes and eukaryotes. It is composed of 24 subunits of the heavy and light ferritin chains. Variation in ferritin subunit composition may affect the rates of iron uptake and release in different tissues. A major function of ferritin is the storage of iron in a soluble and nontoxic state. Defects in this light chain ferritin gene are associated with several neurodegenerative diseases and hyperferritinemia-cataract syndrome. This gene has multiple pseudogenes. [provided by RefSeq, Jul 2008]
------	--

基因ID	2512
基因名	FTL
Swiss	P02792
别名	LFTD; NBIA3

## 产品验证



Western blot analysis of Ferritin Light Chain expressed in Mouse liver, Mouse spleen, Rat liver using Ferritin Light Chain Rabbit mAb at 1:1000. Secondary antibody: HRP Goat Anti-Rabbit IgG (H+L) at 1:5000. Lysates/proteins: 30ug per lane. Blocking buffer: 5% non-fat dry milk in TBST. Detection: ECL Enhanced Kit. Exposure time: 120s.

## 实验步骤

访问官网浏览详情: [www.ablybio.cn](http://www.ablybio.cn)