

PMEL17 / GP100 Rabbit mAb

货号: **AYM29653**

产品信息

反应	Human
宿主	Rabbit
克隆性	Monoclonal
预测反应	
应用	WB IHC
推荐浓度	WB: 1:500 - 1:2000 IHC: 1:50 - 1:200
理论分子量	60kDa/66kDa/70kDa
实测分子量	100kDa
形式	Liquid
保存条件	Store at -20°C. Avoid freeze / thaw cycles. Buffer: PBS with 0.75% BSA,50% glycerol,pH7.3.
偶联物	Unconjugated
阳性对照	A375
细胞定位	Endoplasmic reticulum membrane,Endosome,Golgi apparatus,Melanosome,Secreted,Single-pass type I m embrane protein,multivesicular body
纯化	Affinity purification

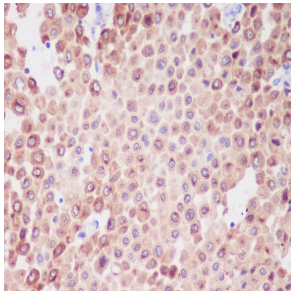
抗原信息

抗原信息	Recombinant fusion protein corresponding to Human PMEL17 / GP100.
序列	PNTTAGQVPTTEVVGTTTPGQAPTAEPSGTTSVQVPTTEVISTAPVQMPTAESTGMTPEKVPVSEVMGTTLAEMSTPEATG MTPAEVSIVVLSGTTAAQVTTTEWVETTARE

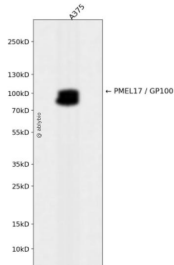
靶点信息

研究背景	This gene encodes a melanocyte-specific type I transmembrane glycoprotein. The encoded protein is enriched in melanosomes, which are the melanin-producing organelles in melanocytes, and plays an essential role in the structural organization of premelanosomes. This protein is involved in generating internal matrix fibers that define the transition from Stage I to Stage II melanosomes. This protein undergoes a complex pattern of posttranslational processing and modification that is essential to the proper functioning of the protein. A secreted form of this protein that is released by proteolytic ectodomain shedding may be used as a melanoma-specific serum marker. Alternate splicing results in multiple transcript variants.
基因ID	6490
基因名	PMEL
Swiss	P40967
别名	PMEL;D12S53E;ME20;ME20-M;ME20M;P1;P100;PMEL17;SI;SIL;SILV;gp100

产品验证



Immunohistochemical analysis of paraffin-embedded human melanoma, using PMEL17 / GP100 Antibody.



Western blot analysis of PMEL17 / GP100 expressed in A375 using PMEL17 / GP100 Rabbit mAb at 1:1000. Secondary antibody: HRP Goat Anti-Rabbit IgG (H+L) at 1:5000. Lysates/proteins: 30 ug per lane. Blocking buffer: 5% non-fat dry milk in TBST. Detection: ECL Enhanced Kit. Exposure time: 120s.

实验步骤

访问官网浏览详情: www.ablybio.cn