

SAE2 / UBA2 Rabbit mAb

货号: **AYM29652**

产品信息

反应	Human,Mouse,Rat
宿主	Rabbit
克隆性	Monoclonal
预测反应	
应用	WB IHC IF/ICC IP
推荐浓度	WB: 1:500 - 1:2000 IHC: 1:50 - 1:200 IF/ICC: 1:50 - 1:200 IP: 1:20 - 1:50
理论分子量	60kDa/71kDa
实测分子量	90kDa
形式	Liquid
保存条件	Store at -20°C. Avoid freeze / thaw cycles. Buffer: PBS with 0.75% BSA,50% glycerol,pH7.3.
偶联物	Unconjugated
阳性对照	Rat lung
细胞定位	Cytoplasm,Nucleus
纯化	Affinity purification

抗原信息

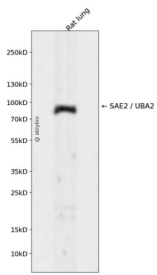
抗原信息	Recombinant fusion protein corresponding to Human SAE2 / UBA2.
序列	QFLFQKKHVGSRKAQVAKESVLQFYPKANIVAYHDSIMNPDYNVEFFRQFILVMNALDNRAARNHVNRMCLAADVPLIES GTAGYLGQVTTIKKGVTECYE

靶点信息

研究背景	Posttranslational modification of proteins by the addition of the small protein SUMO (see SUMO1; MIM 601 912), or sumoylation, regulates protein structure and intracellular localization. SAE1 (MIM 613294) and UBA2 form a heterodimer that functions as a SUMO-activating enzyme for the sumoylation of proteins (Okuma et al., 1999 [PubMed 9920803]).[supplied by OMIM, Mar 2010]
------	--

基因ID	10054
基因名	UBA2
Swiss	Q9UBT2
别名	UBA2;ARX;HRIHFB2115;SAE2

产品验证



Western blot analysis of SAE2 / UBA2 expressed in Rat lung using SAE2 / UBA2 Rabbit mAb at 1:1000. Secondary antibody: HRP Goat Anti-Rabbit IgG (H+L) at 1:5000. Lysates/proteins: 30ug per lane. Blocking buffer: 5% non-fat dry milk in TBST. Detection: ECL Enhanced Kit. Exposure time: 120s.

实验步骤

访问官网浏览详情: www.ablybio.cn