

TAB1 Rabbit mAb

货号: **AYM29644**

产品信息

反应	Human,Mouse,Rat
宿主	Rabbit
克隆性	Monoclonal
预测反应	
应用	WB IHC IF/ICC IP FC
推荐浓度	WB: 1:500 - 1:2000 IHC: 1:50 - 1:200 IF/ICC: 1:50 - 1:200 IP: 1:20 - 1:50 FC: 1:20 - 1:50
理论分子量	49kDa/54kDa
实测分子量	55kDa
形式	Liquid
保存条件	Store at -20°C. Avoid freeze / thaw cycles. Buffer: PBS with 0.75% BSA,50% glycerol,pH7.3.
偶联物	Unconjugated
阳性对照	HL-60,MCF7,A-431,U-251MG,HeLa,Mouse kidney,Mouse heart,Mouse thymus
细胞定位	cytosol,nuclear speck,nucleus
纯化	Affinity purification

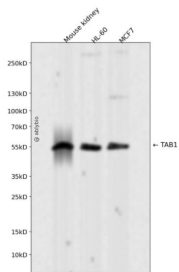
抗原信息

抗原信息	Recombinant fusion protein corresponding to Human TAB1.
序列	VDHTTENEDLFRLSQLGLDAGKIKQVGIICGQESTRRIGDYKVKYGYTDIDLLSAAKSKPIIAEPIHGAQPLDGVTGFLVL MSEGLYKALEAAHGPGQANQEIAAMIDTEFAKQTSLDAVAQAVVDRVKRIHSDTFASGGERARFCPRHEDMTLLVRNFGY PLGEMSQPTSPAPAAGGRVYPVSVPYSSAQSTKTSVTLSLVMPSQGQMVNGAHSASTLDEATPTLTNQSPRTLQSTN THTQSSSSSSDGGGLFRSRPAHSLPPGEDGRVEPYVDFAEFYRLWSVDHGEQSVVTAP

靶点信息

研究背景	The protein encoded by this gene was identified as a regulator of the MAP kinase kinase kinase MAP3K7/TAK1, which is known to mediate various intracellular signaling pathways, such as those induced by TGF beta, interleukin 1, and WNT-1. This protein interacts and thus activates TAK1 kinase. It has been shown that the C-terminal portion of this protein is sufficient for binding and activation of TAK1, while a portion of the N-terminus acts as a dominant-negative inhibitor of TGF beta, suggesting that this protein may function as a mediator between TGF beta receptors and TAK1. This protein can also interact with and activate the mitogen-activated protein kinase 14 (MAPK14/p38alpha), and thus represents an alternative activation pathway, in addition to the MAPKK pathways, which contributes to the biological responses of MAPK14 to various stimuli. Alternatively spliced transcript variants encoding distinct isoforms have been reported.
基因ID	10454
基因名	TAB1
Swiss	Q15750
别名	TAB1;3'-Tab1;MAP3K7IP1

产品验证



Western blot analysis of TAB1 expressed in Mouse kidney,HL-60,MCF7 using TAB1 Rabbit mAb at 1:1000 . Secondary antibody: HRP Goat Anti-Rabbit IgG (H+L) at 1:5000. Lysates/proteins: 30ug per lane. Blocking buffer: 5% non-fat dry milk in TBST. Detection: ECL Enhanced Kit. Exposure time: 120s.

实验步骤

访问官网浏览详情: www.ablybio.cn