

MDH2 Rabbit mAb

货号: **AYM29643**

产品信息

反应	Human,Mouse,Rat
宿主	Rabbit
克隆性	Monoclonal
预测反应	
应用	WB IHC
推荐浓度	WB: 1:500 - 1:2000 IHC: 1:50 - 1:200
理论分子量	30kDa/35kDa
实测分子量	36kDa
形式	Liquid
保存条件	Store at -20°C. Avoid freeze / thaw cycles. Buffer: PBS with 0.75% BSA,50% glycerol,pH7.3.
偶联物	Unconjugated
阳性对照	HeLa,A-431,NIH/3T3,U-87MG,Mouse small intestine,Rat kidney
细胞定位	Mitochondrion matrix
纯化	Affinity purification

抗原信息

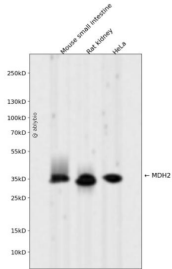
抗原信息	Recombinant fusion protein corresponding to Human MDH2.
序列	VSRLTLYDIAHTPGVAADLSHIETKAAVKGYLGPEQLPDCCLKGCDVVVIPAGVPRKPGMTRDDL FNTNATIVATLTAACAQH CPEAMICVIANPVNSTIPI

靶点信息

研究背景	Malate dehydrogenase catalyzes the reversible oxidation of malate to oxaloacetate, utilizing the NAD/NA DH cofactor system in the citric acid cycle. The protein encoded by this gene is localized to the mitochondria and may play pivotal roles in the malate-aspartate shuttle that operates in the metabolic coordination between cytosol and mitochondria. Several transcript variants encoding different isoforms have been found for this gene.
基因ID	4191

基因名	MDH2
Swiss	P40926
别名	MDH2;EIEE51;M-MDH;MDH;MGC:3559;MOR1

产品验证



Western blot analysis of MDH2 expressed in Mouse small intestine,Rat kidney,HeLa using MDH2 Rabbit m Ab at 1:1000. Secondary antibody: HRP Goat Anti-Rabbit IgG (H+L) at 1:5000. Lysates/proteins: 30ug per lane. Blocking buffer: 5% non-fat dry milk in TBST. Detection: ECL Enhanced Kit. Exposure time: 120s.

实验步骤

访问官网浏览详情: www.ablybio.cn