

Notch1 Rabbit mAb

货号: **AYM29640**

产品信息

反应	Human,Mouse
宿主	Rabbit
克隆性	Monoclonal
预测反应	
应用	WB IHC IF/ICC FC
推荐浓度	WB: 1:500 - 1:2000 IHC: 1:50 - 1:200 IF/ICC: 1:50 - 1:200 FC: 1:20 - 1:50
理论分子量	125kDa
实测分子量	125kDa
形式	Liquid
保存条件	Store at -20°C. Avoid freeze / thaw cycles. Buffer: PBS with 0.75% BSA,50% glycerol,pH7.3.
偶联物	Unconjugated
阳性对照	293T,Jurkat,Mouse lung,Mouse brain
细胞定位	Cell membrane,Nucleus,Single-pass type I membrane protein
纯化	Affinity purification

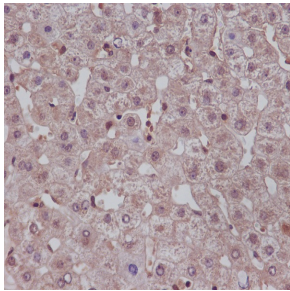
抗原信息

抗原信息	Recombinant fusion protein corresponding to Human Notch1 .
序列	ILPQESPALPTSLPSSLVPPVTAAQFLTPPSQHSYSSPVDNTPSHQLQVPEHPFLTPSPESPDQWSSSSPHSNVSDWSEGV SSPPTSMQSQIARIPEAFK

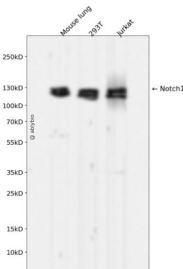
靶点信息

研究背景	This gene encodes a member of the NOTCH family of proteins. Members of this Type I transmembrane protein family share structural characteristics including an extracellular domain consisting of multiple epidermal growth factor-like (EGF) repeats, and an intracellular domain consisting of multiple different domain types. Notch signaling is an evolutionarily conserved intercellular signaling pathway that regulates interactions between physically adjacent cells through binding of Notch family receptors to their cognate ligands. The encoded preproprotein is proteolytically processed in the trans-Golgi network to generate two polypeptide chains that heterodimerize to form the mature cell-surface receptor. This receptor plays a role in the development of numerous cell and tissue types. Mutations in this gene are associated with aortic valve disease, Adams-Oliver syndrome, T-cell acute lymphoblastic leukemia, chronic lymphocytic leukemia, and head and neck squamous cell carcinoma. [provided by RefSeq, Jan 2016]
基因ID	4851
基因名	NOTCH1
Swiss	P46531
别名	AOS5;AOVD1;TAN1;hN1;NOTCH1;Activated NOTCH1;notch 1

产品验证



Immunohistochemical analysis of paraffin-embedded human liver, using Notch1 Antibody .



Western blot analysis of Notch1 expressed in Mouse lung,293T,Jurkat using Notch1 Rabbit mAb at 1:1000. Secondary antibody: HRP Goat Anti-Rabbit IgG (H+L) at 1:5000. Lysates/proteins: 30 ug per lane. Blocking buffer: 5% non-fat dry milk in TBST. Detection: ECL Enhanced Kit. Exposure time: 120s.

实验步骤

访问官网浏览详情: www.ablybio.cn