

# SHP1 Rabbit mAb

货号: **AYM29638**

## 产品信息

反应	Human,Mouse,Rat
宿主	Rabbit
克隆性	Monoclonal
预测反应	
应用	WB IHC
推荐浓度	<b>WB:</b> 1:500 - 1:2000 <b>IHC:</b> 1:50 - 1:200
理论分子量	63kDa/67kDa/70kDa
实测分子量	68kDa
形式	Liquid
保存条件	Store at -20°C. Avoid freeze / thaw cycles. Buffer: PBS with 0.75% BSA,50% glycerol,pH7.3.
偶联物	Unconjugated
阳性对照	BT-474,MCF7,Mouse spleen
细胞定位	Cytoplasm,Nucleus
纯化	Affinity purification

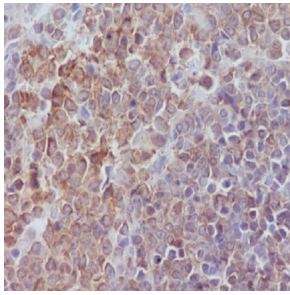
## 抗原信息

抗原信息	Recombinant fusion protein corresponding to Human SHP1.
序列	LNCSDPTSERWYHGHMSGGQAETLLQAKGEPWTFVLVRESLSQPGDFVLSVLSQPKAGPGSPLRVTHIKVMCEGGRYT VGGLETFDLTDLVEHFKKTGIEEASGAFVYLRQPPYATRVAADIENRVLELNKKQESEDTAKAGFWEFESLQKQEVKN LHQRLLEGQRPENKGNRYKNILPFDHSRVILQGRDSNIPGSDYINANYIKNQLLGPDENAKTYIASQGCLCATVNDFWQMA WQENSRVIVMTTREVVEKGRNKCVPYWPEVGMQRAYGPYSVTNCGEHDTEYKLRTLQVSP

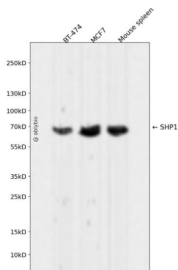
## 靶点信息

研究背景	The protein encoded by this gene is a member of the protein tyrosine phosphatase (PTP) family. PTPs are known to be signaling molecules that regulate a variety of cellular processes including cell growth, differentiation, mitotic cycle, and oncogenic transformation. N-terminal part of this PTP contains two tandem Src homolog (SH2) domains, which act as protein phospho-tyrosine binding domains, and mediate the interaction of this PTP with its substrates. This PTP is expressed primarily in hematopoietic cells, and functions as an important regulator of multiple signaling pathways in hematopoietic cells. This PTP has been shown to interact with, and dephosphorylate a wide spectrum of phospho-proteins involved in hematopoietic cell signaling. Multiple alternatively spliced variants of this gene, which encode distinct isoforms, have been reported.
基因ID	5777
基因名	PTPN6
Swiss	P29350
别名	HCP;HCPH;HPTP1C;PTP-1C;SH-PTP1;SHP-1;SHP-1L;SHP1;CTCN6;PTPN6

## 产品验证



Immunohistochemical analysis of paraffin-embedded rat spleen, using SHP1 Antibody.



Western blot analysis of SHP1 expressed in BT-474, MCF7, Mouse spleen using SHP1 Rabbit mAb at 1:1000. Secondary antibody: HRP Goat Anti-Rabbit IgG (H+L) at 1:5000. Lysates/proteins: 30 ug per lane. Blocking buffer: 5% non-fat dry milk in TBST. Detection: ECL Enhanced Kit. Exposure time: 120s.

## 实验步骤

访问官网浏览详情: [www.ablybio.cn](http://www.ablybio.cn)