

# GLO1 Rabbit mAb

货号: **AYM29633**

## 产品信息

反应	Human,Mouse,Rat
宿主	Rabbit
克隆性	Monoclonal
预测反应	
应用	WB FC
推荐浓度	<b>WB:</b> 1:500 - 1:2000 <b>FC:</b> 1:20 - 1:50
理论分子量	19kDa/20kDa
实测分子量	21kDa
形式	Liquid
保存条件	Store at -20°C. Avoid freeze / thaw cycles. Buffer: PBS with 0.75% BSA,50% glycerol,pH7.3.
偶联物	Unconjugated
阳性对照	BT-474,22Rv1,U-937,PC-3,Mouse kidney
细胞定位	cytoplasm,cytosol,extracellular exosome,nucleoplasm,plasma membrane
纯化	Affinity purification

## 抗原信息

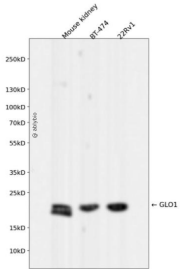
抗原信息	Recombinant fusion protein corresponding to Human GLO1.
序列	MAEPQPPSGGLTDEAALSCCSADPSTKDFLLQQTMLRVKDPKSLDFYTRVLGMTLIQKCDFPIMKFSLYFLAYEDKNDI PKEKDEKIAWALSRKATLELTHNWGTEDDETQSYHNGNSDPRGFGHIGIAVPDVYSACKRFEELGVKFKVPDDGKMKG LAFIQDPDGYWIEILNPNKMATLM

## 靶点信息

研究背景	The enzyme encoded by this gene is responsible for the catalysis and formation of S-lactoyl-glutathione from methylglyoxal condensation and reduced glutathione. Glyoxalase I is linked to HLA and is localized to 6p21.3-p21.1, between HLA and the centromere.
基因ID	2739

基因名	GLO1
Swiss	Q04760
别名	GLO1;GLOD1;GLYI;HEL-S-74

## 产品验证



Western blot analysis of GLO1 expressed in Mouse kidney,BT-474,22Rv1 using GLO1 Rabbit mAb at 1:1000. Secondary antibody: HRP Goat Anti-Rabbit IgG (H+L) at 1:5000. Lysates/proteins: 30ug per lane. Blocking buffer: 5% non-fat dry milk in TBST. Detection: ECL Enhanced Kit. Exposure time: 120s.

## 实验步骤

访问官网浏览详情: [www.ablybio.cn](http://www.ablybio.cn)