

# Phospho-Nucleolin (T76) Rabbit mAb

货号: **AYM29632**

## 产品信息

反应	Human
宿主	Rabbit
克隆性	Monoclonal
预测反应	
应用	WB IHC
推荐浓度	<b>WB:</b> 1:500 - 1:2000 <b>IHC:</b> 1:50 - 1:200
理论分子量	76kDa
实测分子量	100kDa
形式	Liquid
保存条件	Store at -20°C. Avoid freeze / thaw cycles. Buffer: PBS with 0.75% BSA,50% glycerol,pH7.3.
偶联物	Unconjugated
阳性对照	MCF7,A-549,THP-1
细胞定位	Cytoplasm,Nucleus,nucleolus
纯化	Affinity purification

## 抗原信息

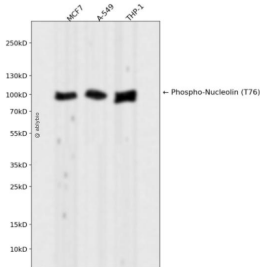
抗原信息	Recombinant fusion protein corresponding to Human Phospho-Nucleolin (T76).
序列	GTEPTTAFNLFVGNLNFNKSAPELKTGISDVFAKNDLAVVDVRRIGMTRKFGYVDFESAEDLEKALELTGLKVFVGNEIKLEKP KGKDSKKERDARTLLAKNLPYKVTQDELKEVFEDAAEIRLVSKDGGKSGIAYIEFKTEADA EKTFEEKQGTEIDGRSISLYYT GE

## 靶点信息

研究背景	Nucleolin (NCL), a eukaryotic nucleolar phosphoprotein, is involved in the synthesis and maturation of ribosomes. It is located mainly in dense fibrillar regions of the nucleolus. Human NCL gene consists of 14 exons with 13 introns and spans approximately 11kb. The intron 11 of the NCL gene encodes a small nucleolar RNA, termed U20.
基因ID	4691

基因名	NCL
Swiss	P19338
别名	NCL;C23;Nsr1;nucleolin

## 产品验证



Western blot analysis of Phospho-Nucleolin (T76) expressed in MCF7,A-549,THP-1 using Phospho-Nucleolin (T76) Rabbit mAb at 1:1000. Secondary antibody: HRP Goat Anti-Rabbit IgG (H+L) at 1:5000. Lysates/proteins: 30ug per lane. Blocking buffer: 5% non-fat dry milk in TBST. Detection : ECL Enhanced Kit. Exposure time: 120s.

## 实验步骤

访问官网浏览详情: [www.ablybio.cn](http://www.ablybio.cn)