

ANP Rabbit mAb

货号: **AYM29630**

产品信息

反应	Human
宿主	Rabbit
克隆性	Monoclonal
预测反应	
应用	WB IP
推荐浓度	WB: 1:500 - 1:2000 IP: 1:20 - 1:50
理论分子量	16kDa
实测分子量	15kDa
形式	Liquid
保存条件	Store at -20°C. Avoid freeze / thaw cycles. Buffer: PBS with 0.75% BSA, 50% glycerol, pH7.3.
偶联物	Unconjugated
阳性对照	Mouse heart
细胞定位	Secreted
纯化	Affinity purification

抗原信息

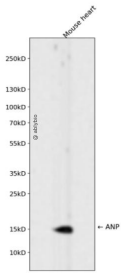
抗原信息	Recombinant fusion protein corresponding to Human ANP.
序列	LTWQEIMSITE LQGLNAPSEPSFEPQAPAPYLGPPPPTTYCPCSIHPDSGFPLPPPPYELPASTSHVPDPPYSYGNMAIPVSKP LSLSGLLSEPLQDPLALLDIGLPAGPPKPQEDPESDSGLSLN

靶点信息

研究背景	The protein encoded by this gene belongs to the natriuretic peptide family. Natriuretic peptides are implicated in the control of extracellular fluid volume and electrolyte homeostasis. This protein is synthesized as a large precursor (containing a signal peptide), which is processed to release a peptide from the N-terminus with similarity to vasoactive peptide, cardiodilatin, and another peptide from the C-terminus with natriuretic-diuretic activity. Mutations in this gene have been associated with atrial fibrillation familial type 6. This gene is located adjacent to another member of the natriuretic family of peptides on chromosome 1.
------	--

基因ID	4878
基因名	NPPA
Swiss	P01160
别名	NPPA;ANF;ANP;ATFB6;ATRST2;CDD;CDD-ANF;CDP;PND;NPPA

产品验证



Western blot analysis of ANP expressed in Mouse heart using ANP Rabbit mAb at 1:1000. Secondary antibody: HRP Goat Anti-Rabbit IgG (H+L) at 1:5000. Lysates/proteins: 30ug per lane. Blocking buffer: 5% non-fat dry milk in TBST. Detection: ECL Enhanced Kit. Exposure time: 120s.

实验步骤

访问官网浏览详情: www.ablybio.cn