

GPCR / LGR6 Rabbit mAb

货号: **AYM29612**

产品信息

反应	Human,Mouse,Rat
宿主	Rabbit
克隆性	Monoclonal
预测反应	
应用	WB IHC IF/ICC FC
推荐浓度	WB: 1:500 - 1:2000 IHC: 1:50 - 1:200 IF/ICC: 1:50 - 1:200 FC: 1:20 - 1:50
理论分子量	89kDa/99kDa/104kDa
实测分子量	104kDa
形式	Liquid
保存条件	Store at -20°C. Avoid freeze / thaw cycles. Buffer: PBS with 0.75% BSA,50% glycerol,pH7.3.
偶联物	Unconjugated
阳性对照	A-549,Raji
细胞定位	Cell membrane,Multi-pass membrane protein
纯化	Affinity purification

抗原信息

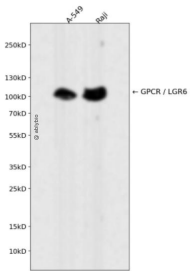
抗原信息	Recombinant fusion protein corresponding to Human GPCR / LGR6.
序列	ALDLSWNAIRSIHPEAFSTLHSLVKLDLTDNQLTTPLAGLGGLMHLKLGKGNLALSQAFSKDSFPKLRILEVPYAYQCCPYG MCASFFKASGQWEAEDLHLDDEESSKRPLGLLARQAENHYDQDLDELQLEMEDSKPHPSVQCSPTPGPFKPCYELFESW

靶点信息

研究背景	This gene encodes a member of the leucine-rich repeat-containing subgroup of the G protein-coupled 7-transmembrane protein superfamily. The encoded protein is a glycoprotein hormone receptor with a large N-terminal extracellular domain that contains leucine-rich repeats important for the formation of a horseshoe-shaped interaction motif for ligand binding. Alternative splicing of this gene results in multiple transcript variants.
------	---

基因ID	59352
基因名	LGR6
Swiss	Q9HBX8
别名	LGR6;GPCR;VTS20631

产品验证



Western blot analysis of GPCR / LGR6 expressed in A-549, Raji using GPCR / LGR6 Rabbit mAb at 1:1000. Secondary antibody: HRP Goat Anti-Rabbit IgG (H+L) at 1:5000. Lysates/proteins: 30ug per lane. Blocking buffer: 5% non-fat dry milk in TBST. Detection: ECL Enhanced Kit. Exposure time: 120s.

实验步骤

访问官网浏览详情: www.ablybio.cn