

# CENPC Rabbit mAb

货号: **AYM29603**

## 产品信息

反应	Human,Mouse,Rat
宿主	Rabbit
克隆性	Monoclonal
预测反应	
应用	WB IHC IF/ICC IP FC
推荐浓度	<b>WB:</b> 1:500 - 1:2000 <b>IHC:</b> 1:50 - 1:200 <b>IF/ICC:</b> 1:50 - 1:200 <b>IP:</b> 1:20 - 1:50 <b>FC:</b> 1:20 - 1:50
理论分子量	107kDa
实测分子量	107kDa
形式	Liquid
保存条件	Store at -20°C. Avoid freeze / thaw cycles. Buffer: PBS with 0.75% BSA,50% glycerol,pH7.3.
偶联物	Unconjugated
阳性对照	HeLa,Jurkat
细胞定位	cytosol,nuclear body,nucleoplasm
纯化	Affinity purification

## 抗原信息

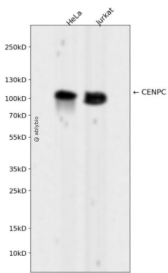
抗原信息	Recombinant fusion protein corresponding to Human CENPC.
序列	VLDTSYALIGETVNNYRSTKYEMYSKNAEKPSRSKRTIKQKQRRKFMAKPAEEQLDVGQSKDENIHTSHITQDEFQRNSDR NMEEHEEMGNDVCVSKKQMPVGSKKSSSTRKDKEESKKKRFSSSESKNKLVPPEEVTSTVTKS

## 靶点信息

研究背景	Centromere protein C 1 is a centromere autoantigen and a component of the inner kinetochore plate. The protein is required for maintaining proper kinetochore size and a timely transition to anaphase. A putative pseudogene exists on chromosome 12. [provided by RefSeq, Jul 2008]
------	---

基因ID	1060
基因名	CENPC
Swiss	Q03188
别名	CENP-C; CENPC1; MIF2; hcp-4

## 产品验证



Western blot analysis of CENPC expressed in HeLa, Jurkat using CENPC Rabbit mAb at 1:1000. Secondary antibody: HRP Goat Anti-Rabbit IgG (H+L) at 1:5000. Lysates/proteins: 30ug per lane. Blocking buffer: 5 % non-fat dry milk in TBST. Detection: ECL Enhanced Kit. Exposure time: 120s.

## 实验步骤

访问官网浏览详情: [www.ablybio.cn](http://www.ablybio.cn)