

# LC3B Rabbit mAb

货号: **AYM29598**

## 产品信息

|       |  |
|-------|--|
| 反应    | Human,Mouse,Rat  |
| 宿主    | Rabbit   |
| 克隆性   | Monoclonal   |
| 预测反应  |  |
| 应用    | WB IF/ICC IP   |
| 推荐浓度  | <b>WB:</b> 1:500 - 1:2000<br><b>IF/ICC:</b> 1:50 - 1:200<br><b>IP:</b> 1:20 - 1:50                               |
| 理论分子量 | 14kDa  |
| 实测分子量 | 14,16kDa   |
| 形式    | Liquid   |
| 保存条件  | Store at -20°C. Avoid freeze / thaw cycles.<br>Buffer: PBS with 0.75% BSA,50% glycerol,pH7.3.                    |
| 偶联物   | Unconjugated   |
| 阳性对照  | 293T,NIH/3T3,C6  |
| 细胞定位  | Cytoplasm,Cytoplasmic vesicle,Endomembrane system,Lipid-anchor,autophagosome,autophagosome membrane,cytoskeleton |
| 纯化    | Affinity purification  |

## 抗原信息

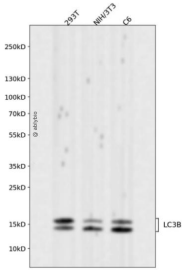
|      |  |
|------|--|
| 抗原信息 | Recombinant fusion protein corresponding to Human LC3B.  |
| 序列   | MPSEKTFKQRRTFEQRVEDVRLIREQHPTKIPVIERKGEKQLPVLDTKFLVDPDHVNMSELIKIIRRLQLNANQAFFLLVN<br>GHSMVSVSTPISEVYESEKDEDGLYLMVYASQETFGMKLSV |

## 靶点信息

|      |  |
|------|--|
| 研究背景 | The product of this gene is a subunit of neuronal microtubule-associated MAP1A and MAP1B proteins, which are involved in microtubule assembly and important for neurogenesis. Studies on the rat homolog implicate a role for this gene in autophagy, a process that involves the bulk degradation of cytoplasmic component. |
|------|--|

|       |  |
|-------|--|
| 基因ID  | 81631  |
| 基因名   | MAP1LC3B   |
| Swiss | Q9GZQ8   |
| 别名    | LC3B;ATG8F;MAP1LC3B-a;MAP1A/1BLC3;MAP1LC3B;LC3A/LC3B |

## 产品验证



Western blot analysis of LC3B expressed in 293T,NIH/3T3,C6 using LC3B Rabbit mAb at 1:1000. Second ary antibody: HRP Goat Anti-Rabbit IgG (H+L) at 1:5000. Lysates/proteins: 30ug per lane. Blocking buff er: 5% non-fat dry milk in TBST. Detection: ECL Enhanced Kit. Exposure time: 120s.

## 实验步骤

访问官网浏览详情: [www.ablybio.cn](http://www.ablybio.cn)