

# NuMA Rabbit mAb

货号: **AYM29596**

## 产品信息

反应	Human,Mouse,Rat
宿主	Rabbit
克隆性	Monoclonal
预测反应	
应用	WB IHC IF/ICC
推荐浓度	<b>WB:</b> 1:500 - 1:2000 <b>IHC:</b> 1:50 - 1:200 <b>IF/ICC:</b> 1:50 - 1:200
理论分子量	109kDa/200kDa/201kDa/236kDa/238kDa
实测分子量	238kDa
形式	Liquid
保存条件	Store at -20°C. Avoid freeze / thaw cycles. Buffer: PBS with 0.75% BSA,50% glycerol,pH7.3.
偶联物	Unconjugated
阳性对照	HeLa,Mouse kidney
细胞定位	Chromosome,Cytoplasm,Nucleus matrix,cytoskeleton,spindle pole
纯化	Affinity purification

## 抗原信息

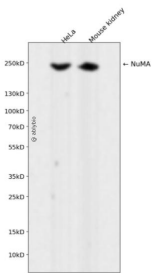
抗原信息	Recombinant fusion protein corresponding to Human NuMA.
序列	MTLHATRGAALLSWVNSLHVADPVEAVLQLQDCSIFIKIIDRIHGTEEGQQILKQPVSERLDFVCSFLQKNRKHPSPECLV SAQKVLGSELELAKMTMLLLYHSTMSSKSPRDWEQFEYKIQAEALAVILKFVLDHEDGLNLNEDLENFLQKAPVPSTCSST FPEELSPPHQAKREIRFLELQKVASSSSGNNFLSGSPASPMGDILQTPQFQMRRLKKQLADERSNRDELELELAENRKLTT EKDAQIAMMQQRIDRLALLNEKQAASPLEPKELEELRDKNESLTMRHLHETLKQCQDLKTEKSQM

## 靶点信息

研究背景	This gene encodes a large protein that forms a structural component of the nuclear matrix. The encoded protein interacts with microtubules and plays a role in the formation and organization of the mitotic spindle during cell division. Chromosomal translocation of this gene with the RARA (retinoic acid receptor, alpha) gene on chromosome 17 have been detected in patients with acute promyelocytic leukemia. Alternative splicing results in multiple transcript variants.
------	---

基因ID	4926
基因名	NUMA1
Swiss	Q14980
别名	NUMA1;NMP-22;NUMA

### 产品验证



Western blot analysis of NuMA expressed in HeLa, Mouse kidney using NuMA Rabbit mAb at 1:1000. Secondary antibody: HRP Goat Anti-Rabbit IgG (H+L) at 1:5000. Lysates/proteins: 30ug per lane. Blocking buffer: 5% non-fat dry milk in TBST. Detection: ECL Enhanced Kit. Exposure time: 120s.

### 实验步骤

访问官网浏览详情: [www.ablybio.cn](http://www.ablybio.cn)