

MEK3/MEK6 Rabbit mAb

货号: **AYM29594**

产品信息

反应	Human,Mouse,Rat
宿主	Rabbit
克隆性	Monoclonal
预测反应	
应用	WB IHC IF/ICC IP FC
推荐浓度	WB: 1:500 - 1:2000 IHC: 1:50 - 1:200 IF/ICC: 1:50 - 1:200 IP: 1:20 - 1:50 FC: 1:20 - 1:50
理论分子量	36kDa/39kDa/31kDa/37kDa
实测分子量	39,37kDa
形式	Liquid
保存条件	Store at -20°C. Avoid freeze / thaw cycles. Buffer: PBS with 0.75% BSA,50% glycerol,pH7.3.
偶联物	Unconjugated
阳性对照	NIH/3T3
细胞定位	cytosol,nucleoplasm
纯化	Affinity purification

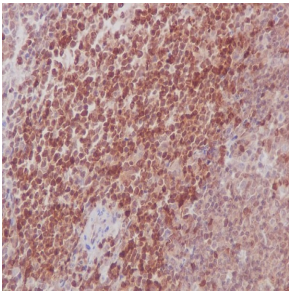
抗原信息

抗原信息	Recombinant fusion protein corresponding to Human MEK3/MEK6.
序列	VDSVA

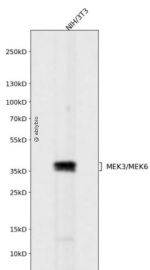
靶点信息

研究背景	The protein encoded by this gene is a dual specificity protein kinase that belongs to the MAP kinase kinase family. This kinase is activated by mitogenic and environmental stress, and participates in the MAP kinase-mediated signaling cascade. It phosphorylates and thus activates MAPK14/p38-MAPK. This kinase can be activated by insulin, and is necessary for the expression of glucose transporter. Expression of RAS oncogene is found to result in the accumulation of the active form of this kinase, which thus leads to the constitutive activation of MAPK14, and confers oncogenic transformation of primary cells. The inhibition of this kinase is involved in the pathogenesis of Yersinia pseudotuberculosis. Multiple alternatively spliced transcript variants that encode distinct isoforms have been reported for this gene. [provided by RefSeq, Jul 2008]
基因ID	5606,5608
基因名	MAP2K3,MAP2K6
Swiss	P46734/P52564
别名	MAP2K3/MAP2K6

产品验证



Immunohistochemical analysis of paraffin-embedded mouse spleen, using MEK3/MEK6 Antibody.



Western blot analysis of MEK3/MEK6 expressed in NIH/3T3 using MEK3/MEK6 Rabbit mAb at 1:1000. Secondary antibody: HRP Goat Anti-Rabbit IgG (H+L) at 1:5000. Lysates/proteins: 30ug per lane. Blocking buffer: 5% non-fat dry milk in TBST. Detection: ECL Enhanced Kit. Exposure time: 120s.

实验步骤

访问官网浏览详情: www.ablybio.cn