

Moesin Rabbit mAb

货号: **AYM29592**

产品信息

反应	Human,Mouse,Rat
宿主	Rabbit
克隆性	Monoclonal
预测反应	
应用	WB IHC IF/ICC IP FC
推荐浓度	WB: 1:500 - 1:2000 IHC: 1:50 - 1:200 IF/ICC: 1:50 - 1:200 IP: 1:20 - 1:50 FC: 1:20 - 1:50
理论分子量	67kDa
实测分子量	68kDa
形式	Liquid
保存条件	Store at -20°C. Avoid freeze / thaw cycles. Buffer: PBS with 0.75% BSA,50% glycerol,pH7.3.
偶联物	Unconjugated
阳性对照	HeLa,OVCAR3,HT-29,SW620,Mouse spleen,Mouse lung,Mouse kidney
细胞定位	Apical cell membrane,Cell membrane,Cell projection,Cytoplasm,Cytoplasmic side,Peripheral membrane protein,cytoskeleton,microvillus membrane
纯化	Affinity purification

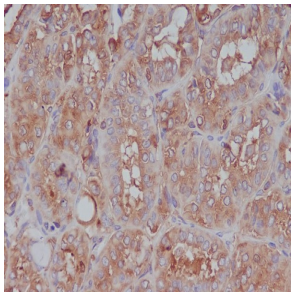
抗原信息

抗原信息	Recombinant fusion protein corresponding to Human Moesin.
序列	MPKTISVRVTTMDAELEFAIQPNTTGKQLFDQVVKTIGLREVWFFGLQYQDTKGFSTWLKLNKKVTAQDVRKESPLLKFR AKFYPEDVSEELIQDITQRLFFLQVKEGILNDDIYCPPETAVLLASYAVQSKYGDFNKEVHKSGYLAGDKLLPQRVLEQHKL NKDQWEERIQVWHEEHRGMLREDAVLEYLKIAQDLEMYGVNYFSIKNKKGSELWLGVDALGLNIYEQNDRLTPKIGFPWS EIRNISFNDKKFVIKPIDKKAPDFVFYAPRLRINKRILALCMGNHELYMRRRKPDIT

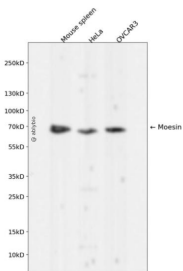
靶点信息

研究背景	Moesin (for membrane-organizing extension spike protein) is a member of the ERM family which includes ezrin and radixin. ERM proteins appear to function as cross-linkers between plasma membranes and actin-based cytoskeletons. Moesin is localized to filopodia and other membranous protrusions that are important for cell-cell recognition and signaling and for cell movement.
基因ID	4478
基因名	MSN
Swiss	P26038
别名	MSN;HEL70;IMD50;moesin

产品验证



Immunohistochemical analysis of paraffin-embedded human thyroid cancer, using Moesin Antibody.



Western blot analysis of Moesin expressed in Mouse spleen, HeLa, OVCAR3 using Moesin Rabbit mAb at 1:1000. Secondary antibody: HRP Goat Anti-Rabbit IgG (H+L) at 1:5000. Lysates/proteins: 30ug per lane. Blocking buffer: 5% non-fat dry milk in TBST. Detection: ECL Enhanced Kit. Exposure time: 120s.

实验步骤

访问官网浏览详情: www.ablybio.cn