

# Cathepsin H Rabbit mAb

货号: **AYM29579**

## 产品信息

反应	Human
宿主	Rabbit
克隆性	Monoclonal
预测反应	
应用	WB IHC IF/ICC
推荐浓度	<b>WB:</b> 1:500 - 1:2000 <b>IHC:</b> 1:50 - 1:200 <b>IF/ICC:</b> 1:50 - 1:200
理论分子量	37kDa
实测分子量	40/28kDa
形式	Liquid
保存条件	Store at -20°C. Avoid freeze / thaw cycles. Buffer: PBS with 0.75% BSA,50% glycerol,pH7.3.
偶联物	Unconjugated
阳性对照	HepG2,A-549,Mouse liver,Mouse kidney,Rat liver,Rat kidney
细胞定位	Lysosome
纯化	Affinity purification

## 抗原信息

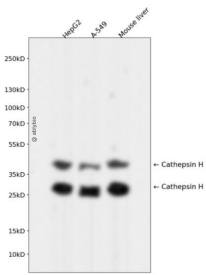
抗原信息	Recombinant fusion protein corresponding to Human Cathepsin H.
序列	AELCVNSLEKFHFKSWMSKHKRKYSTEYHHRLQTFASNWRKINAHNNGNHTFKMALNQFSDMSFAEIKHKYLWSEPQN CSATKSNYLRGTGPYPPSVDWRKKGNFVSPVKNQGACGS

## 靶点信息

研究背景	The protein encoded by this gene is a lysosomal cysteine proteinase important in the overall degradation of lysosomal proteins. It is composed of a dimer of disulfide-linked heavy and light chains, both produced from a single protein precursor. The encoded protein, which belongs to the peptidase C1 protein family, can act both as an aminopeptidase and as an endopeptidase. Increased expression of this gene has been correlated with malignant progression of prostate tumors. Alternate splicing of this gene results in multiple transcript variants encoding different isoforms.
------	--

基因ID	1512
基因名	CTSH
Swiss	P09668
别名	CTSH;ACC-4;ACC-5;ACC4;ACC5;CPSB

## 产品验证



Western blot analysis of Cathepsin H expressed in HepG2,A-549,Mouse liver using Cathepsin H Rabbit mAb at 1:1000. Secondary antibody: HRP Goat Anti-Rabbit IgG (H+L) at 1:5000. Lysates/proteins: 30 ug per lane. Blocking buffer: 5% non-fat dry milk in TBST. Detection: ECL Enhanced Kit. Exposure time: 120s.

## 实验步骤

访问官网浏览详情: [www.ablybio.cn](http://www.ablybio.cn)