

Protein Phosphatase 1 beta Rabbit mAb

货号: **AYM29576**

产品信息

反应	Human,Mouse,Rat
宿主	Rabbit
克隆性	Monoclonal
预测反应	
应用	WB IHC IF/ICC IP FC
推荐浓度	WB: 1:500 - 1:2000 IHC: 1:50 - 1:200 IF/ICC: 1:50 - 1:200 IP: 1:20 - 1:50 FC: 1:20 - 1:50
理论分子量	37kDa
实测分子量	37kDa
形式	Liquid
保存条件	Store at -20°C. Avoid freeze / thaw cycles. Buffer: PBS with 0.75% BSA,50% glycerol,pH7.3.
偶联物	Unconjugated
阳性对照	SW480,HL-60,Jurkat,Mouse brain,Rat brain
细胞定位	Cytoplasm,Nucleus,nucleolus,nucleoplasm
纯化	Affinity purification

抗原信息

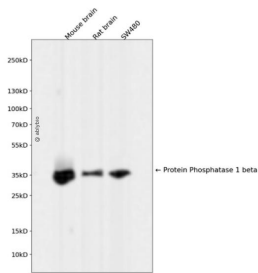
抗原信息	Recombinant fusion protein corresponding to Human Protein Phosphatase 1 beta.
序列	VEDGYEFFAKRQLVTLFSAPNYCGEFDNAGGMMSVDETLMCSFQILKPSEKKAKYQYGGNLNSGRPVTPPRTANPPKKR

靶点信息

研究背景	The protein encoded by this gene is one of the three catalytic subunits of protein phosphatase 1 (PP1). PP 1 is a serine/threonine specific protein phosphatase known to be involved in the regulation of a variety of cellular processes, such as cell division, glycogen metabolism, muscle contractility, protein synthesis, and HIV-1 viral transcription. Mouse studies suggest that PP1 functions as a suppressor of learning and memory. Two alternatively spliced transcript variants encoding distinct isoforms have been observed.
------	--

基因ID	5500
基因名	PPP1CB
Swiss	P62140
别名	PPP1CB;HEL-S-80p;PP-1B;PP1B;PP1beta;PPP1CD;NSLH2

产品验证



Western blot analysis of Protein Phosphatase 1 beta expressed in Mouse brain,Rat brain,SW480 using Protein Phosphatase 1 beta Rabbit mAb at 1:1000. Secondary antibody: HRP Goat Anti-Rabbit IgG (H+L) at 1:5000. Lysates/proteins: 30ug per lane. Blocking buffer: 5% non-fat dry milk in TBST. Detection: ECL Enhanced Kit. Exposure time: 120s.

实验步骤

访问官网浏览详情: www.ablybio.cn