

# ABCF1 Rabbit mAb

货号: **AYM29567**

## 产品信息

反应	Human,Rat
宿主	Rabbit
克隆性	Monoclonal
预测反应	
应用	WB IHC IF/ICC
推荐浓度	<b>WB:</b> 1:500 - 1:2000 <b>IHC:</b> 1:50 - 1:200 <b>IF/ICC:</b> 1:50 - 1:200
理论分子量	96kDa
实测分子量	96kDa
形式	Liquid
保存条件	Store at -20°C. Avoid freeze / thaw cycles. Buffer: PBS with 0.75% BSA,50% glycerol,pH7.3.
偶联物	Unconjugated
阳性对照	HeLa,HepG2
细胞定位	cytoplasm,cytosol,nuclear envelope,nucleoplasm
纯化	Affinity purification

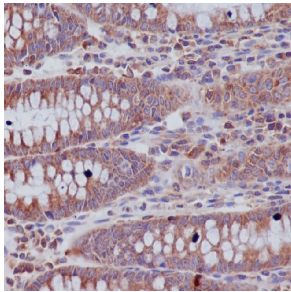
## 抗原信息

抗原信息	Recombinant fusion protein corresponding to Human ABCF1.
序列	GQKARVVFAELACREPDVLILDEPTNNLDIESIDALGEAINEYKGAVIVVSHDARLITETNCQLWVVEEQSVSQIDGDFEDYK REVLEALGEVMVSRPRE

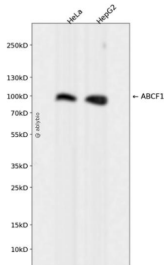
## 靶点信息

研究背景	The protein encoded by this gene is a member of the superfamily of ATP-binding cassette (ABC) transporters. ABC proteins transport various molecules across extra- and intra-cellular membranes. ABC genes are divided into seven distinct subfamilies (ABC1, MDR/TAP, MRP, ALD, OABP, GCN20, White). This protein is a member of the GCN20 subfamily. Unlike other members of the superfamily, this protein lacks the trans membrane domains which are characteristic of most ABC transporters. This protein may be regulated by tumor necrosis factor-alpha and play a role in enhancement of protein synthesis and the inflammation process. [provided by RefSeq, Jul 2008]
基因ID	23
基因名	ABCF1
Swiss	Q8NE71
别名	ABC27; ABC50

## 产品验证



Immunohistochemical analysis of paraffin-embedded human colon, using ABCF1 Antibody.



Western blot analysis of ABCF1 expressed in HeLa, HepG2 using ABCF1 Rabbit mAb at 1:1000. Secondary antibody: HRP Goat Anti-Rabbit IgG (H+L) at 1:5000. Lysates/proteins: 30ug per lane. Blocking buffer: 5% non-fat dry milk in TBST. Detection: ECL Enhanced Kit. Exposure time: 120s.

## 实验步骤

访问官网浏览详情: [www.ablybio.cn](http://www.ablybio.cn)