

# KLK2 Rabbit mAb

货号: **AYM29559**

## 产品信息

反应	Human,Mouse,Rat
宿主	Rabbit
克隆性	Monoclonal
预测反应	
应用	WB IF/ICC
推荐浓度	<b>WB:</b> 1:500 - 1:2000 <b>IF/ICC:</b> 1:50 - 1:200
理论分子量	17kDa/18kDa/24kDa/28kDa
实测分子量	33kDa
形式	Liquid
保存条件	Store at -20°C. Avoid freeze / thaw cycles. Buffer: PBS with 0.75% BSA,50% glycerol,pH7.3.
偶联物	Unconjugated
阳性对照	DU145,Mouse pancreas
细胞定位	extracellular exosome,extracellular region
纯化	Affinity purification

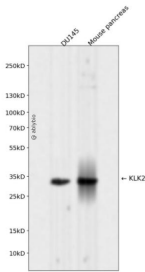
## 抗原信息

抗原信息	Recombinant fusion protein corresponding to Human KLK2.
序列	IVGGWECEKHSQPWQVAVYSHGWAHC GGVLVHPQWVLTAAHCLKKNSQVWLGRHNLFPEDTGQRVPVSHSFPHPPLY NMSLLKHQSLRPDEDSHDLMLLRLSEPAKITDVVKVLGLPTQEPALGTTTCYASGWGSIEPEEFLRPRSLQCVSLHLLSND MCARAYSEKVTEFMLCAGLWTGGKDTCCGGDSGGPLVCNGVLQGITSWGPEPCALPEKPAVYTKVVHYR

## 靶点信息

研究背景	This gene encodes a member of the granular kallikrein protein family. Kallikreins are a subgroup of serine proteases that are clustered on chromosome 19. Members of this family are involved in a diverse array of biological functions. The protein encoded by this gene is a highly active trypsin-like serine protease that selectively cleaves at arginine residues. This protein is primarily expressed in prostatic tissue and is responsible for cleaving pro-prostate-specific antigen into its enzymatically active form. This gene is highly expressed in prostate tumor cells and may be a prognostic marker for prostate cancer risk. Alternate splicing results in both coding and non-coding transcript variants.
基因ID	3817
基因名	KLK2
Swiss	P20151
别名	KLK2;KLK2A2;hGK-1;hK2

## 产品验证



Western blot analysis of KLK2 expressed in DU145, Mouse pancreas using KLK2 Rabbit mAb at 1:1000. Secondary antibody: HRP Goat Anti-Rabbit IgG (H+L) at 1:5000. Lysates/proteins: 30ug per lane. Blocking buffer: 5% non-fat dry milk in TBST. Detection: ECL Enhanced Kit. Exposure time: 120s.

## 实验步骤

访问官网浏览详情: [www.ablybio.cn](http://www.ablybio.cn)