

RALBP1 Rabbit mAb

货号: **AYM29556**

产品信息

反应	Human,Mouse,Rat
宿主	Rabbit
克隆性	Monoclonal
预测反应	
应用	WB IHC FC
推荐浓度	WB: 1:500 - 1:2000 IHC: 1:50 - 1:200 FC: 1:20 - 1:50
理论分子量	76kDa
实测分子量	95kDa
形式	Liquid
保存条件	Store at -20°C. Avoid freeze / thaw cycles. Buffer: PBS with 0.75% BSA,50% glycerol,pH7.3.
偶联物	Unconjugated
阳性对照	A-673,Mouse spleen,Mouse lung
细胞定位	Membrane,Peripheral membrane protein
纯化	Affinity purification

抗原信息

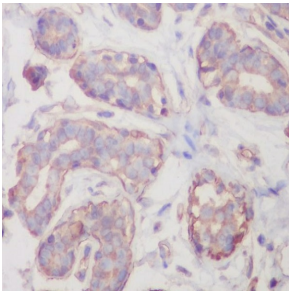
抗原信息	Recombinant fusion protein corresponding to Human RALBP1.
序列	AGIKEEIRRQEFLLNCLHRDLQGGIKDLSKEERLWEVQRILTALKRKLREAKRQECETKIAQEIASLSKEDVSK EEMNENEVI NILLAQENEILTEQEELLAMEQFLRRQIASEKEEIERLRAEIAEIQSRQQHGRSETEEYSSESESESEDEEELQIILEDLQRQNEE LEIKNNHLNQAIIHEEREAIIELRVQLRLLQMQRAKAEQQAQEDEEPEWRGGAVQPPRDGVLPKAAKEQPKAGKEPAKPS SRDRKETS I

靶点信息

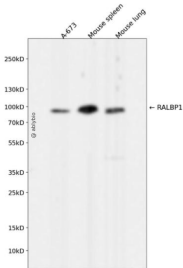
研究背景	RALBP1 plays a role in receptor-mediated endocytosis and is a downstream effector of the small GTP-binding protein RAL (see RALA; MIM 179550). Small G proteins, such as RAL, have GDP-bound inactive and GTP-bound active forms, which shift from the inactive to the active state through the action of RALGDS (MIM 601619), which in turn is activated by RAS (see HRAS; MIM 190020) (summary by Feig, 2003 [PubMed 12 888294]).
------	---

基因ID	10928
基因名	RALBP1
Swiss	Q15311
别名	RALBP1;RIP1;RLIP1;RLIP76

产品验证



Immunohistochemical analysis of paraffin-embedded human breast, using RALBP1 Antibody.



Western blot analysis of RALBP1 expressed in A-673, Mouse spleen, Mouse lung using RALBP1 R abbit mAb at 1:1000. Secondary antibody: HRP Goat Anti-Rabbit IgG (H+L) at 1:5000. Lysates/ proteins: 30ug per lane. Blocking buffer: 5% non-fat dry milk in TBST. Detection: ECL Enhanced Kit. Exposure time: 120s.

实验步骤

访问官网浏览详情: www.ablybio.cn