

Lysophospholipase 1 Rabbit mAb

货号: **AYM29554**

产品信息

反应	Human,Mouse,Rat
宿主	Rabbit
克隆性	Monoclonal
预测反应	
应用	WB IF/ICC FC
推荐浓度	WB: 1:500 - 1:2000 IF/ICC: 1:50 - 1:200 FC: 1:20 - 1:50
理论分子量	22kDa/24kDa
实测分子量	25kDa
形式	Liquid
保存条件	Store at -20°C. Avoid freeze / thaw cycles. Buffer: PBS with 0.75% BSA,50% glycerol,pH7.3.
偶联物	Unconjugated
阳性对照	LO2,Mouse heart,Mouse kidney
细胞定位	Cytoplasm
纯化	Affinity purification

抗原信息

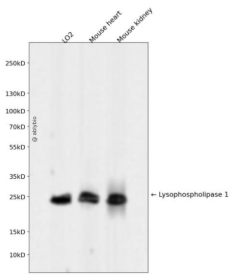
抗原信息	Recombinant fusion protein corresponding to Human Lysophospholipase 1.
序列	MCGNNMSTPLPAIVPAARKATAAVIFLHGLGDTGHGWAEAFAGIRSSHICYICPHAPVRPVTLMNPNVAMPVSWFDIIGLSPD SQEDESIGKQAAENIKALIDQEVKNGIIPSNRIILGGFSQGGALSLYTALTTQQLAGVTALSCWLPPLRASFPQGPVGGANRDI SILQCHGDCDPLVPLMFGSLTVEKLTLPANVTFKTYEGMMHSSCQEMMDVKQFIDKLLPPID

靶点信息

研究背景	This gene encodes a member of the alpha/beta hydrolase superfamily. The encoded protein functions as a homodimer, exhibiting both depalmitoylating as well as lysophospholipase activity, and may be involved in Ras localization and signaling. Alternate splicing results in multiple transcript variants. Pseudogenes of this gene have been defined on chromosomes 4, 6, and 7.
------	---

基因ID	10434
基因名	LYPLA1
Swiss	O75608
别名	LYPLA1;APT-1;APT1;LPL-I;LPL1;hAPT1

产品验证



Western blot analysis of Lysophospholipase 1 expressed in LO2, Mouse heart, Mouse kidney using Lysophospholipase 1 Rabbit mAb at 1:1000. Secondary antibody: HRP Goat Anti-Rabbit IgG (H+L) at 1:5000. Lysates/proteins: 30ug per lane. Blocking buffer: 5% non-fat dry milk in TBST. Detection: E CL Enhanced Kit. Exposure time: 120s.

实验步骤

访问官网浏览详情: www.ablybio.cn