

MelanA Rabbit mAb

货号: **AYM29546**

产品信息

反应	Human
宿主	Rabbit
克隆性	Monoclonal
预测反应	
应用	WB IHC IF/ICC FC
推荐浓度	WB: 1:500 - 1:2000 IHC: 1:50 - 1:200 IF/ICC: 1:50 - 1:200 FC: 1:20 - 1:50
理论分子量	13kDa
实测分子量	20kDa
形式	Liquid
保存条件	Store at -20°C. Avoid freeze / thaw cycles. Buffer: PBS with 0.75% BSA,50% glycerol,pH7.3.
偶联物	Unconjugated
阳性对照	SK-MEL-28,OVCAR3
细胞定位	Endoplasmic reticulum membrane,Golgi apparatus,Melanosome,Single-pass type III membrane protein,trans-Golgi network membrane
纯化	Affinity purification

抗原信息

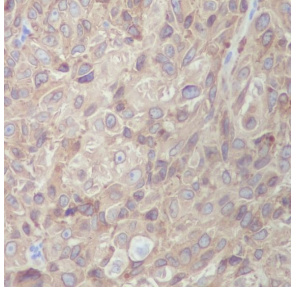
抗原信息	Recombinant fusion protein corresponding to Human MelanA.
序列	CRRRRNGYRALMDKSLHVGTTQCALTRRCPEGFDHRDSKVSLQEKNCPEVVPNAPPAYEKLSAEQSPPPYSP

靶点信息

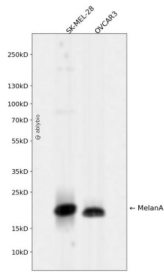
研究背景	Involved in melanosome biogenesis by ensuring the stability of GPR143. Plays a vital role in the expression, stability, trafficking, and processing of melanocyte protein PMEL, which is critical to the formation of stage II melanosomes.
基因ID	2315

基因名	MLANA
Swiss	Q16655
别名	MLANA;MART-1;MART1;melan-A

产品验证



Immunohistochemical analysis of paraffin-embedded human melanoma, using MLANA Antibody



Western blot analysis of MelanA expressed in SK-MEL-28, OVCAR3 using MelanA Rabbit mAb at 1:1000. Secondary antibody: HRP Goat Anti-Rabbit IgG (H+L) at 1:5000. Lysates/proteins: 30ug per lane. Blocking buffer: 5% non-fat dry milk in TBST. Detection: ECL Enhanced Kit. Exposure time: 120s.

实验步骤

访问官网浏览详情: www.ablybio.cn