

CD36 Rabbit mAb

货号: **AYM29541**

产品信息

反应	Human,Mouse,Rat
宿主	Rabbit
克隆性	Monoclonal
预测反应	
应用	WB IHC IP
推荐浓度	WB: 1:500 - 1:2000 IHC: 1:50 - 1:200 IP: 1:20 - 1:50
理论分子量	32kDa/46kDa/48kDa/53kDa
实测分子量	70-120kDa
形式	Liquid
保存条件	Store at -20°C. Avoid freeze / thaw cycles. Buffer: PBS with 0.75% BSA,50% glycerol,pH7.3.
偶联物	Unconjugated
阳性对照	HEL,THP-1,Mouse lung,Mouse heart,Rat heart
细胞定位	Cell membrane,Multi-pass membrane protein
纯化	Affinity purification

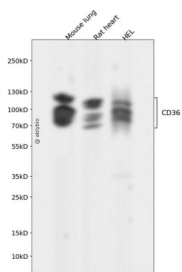
抗原信息

抗原信息	Recombinant fusion protein corresponding to Human CD36.
序列	GDLLIQKTIKKQVVLEEGTIAFKNWWKGTGEVYRQFWIFDVQNPQEVMMNSSNIQVKQRGPYTYRVRFLAKENVTDQDAED NTVSFLQPNGAIFEPSLSVGTEADNFTVLNLAVAAASHIQNQFVQMILNSLINKSKSSMFQVRTLRELLWGYRDPFLSLVP YPVTTTTVGLFYPYNNTADGVYKVFNGKDNISKVAIIDTYGKRNLISYWESHCDMINGTDAASFPPFVEKSQVLQFFSSDIC RSIYAVFESDVNLKGIPIVYRFVLPKAFASPVENPDNYCFCTEKIISKNCTSYGVLDISKCKEGRPVYISLPHFLYASPDVSEPI DGLNPNEEEHRTYLDIEPITGFTLQFAKRLQVNLVLPSEKIQVLKLNKRNIVIPILWLNETGTIGDEKANMFRSQVTGKIN

靶点信息

研究背景	The protein encoded by this gene is the fourth major glycoprotein of the platelet surface and serves as a receptor for thrombospondin in platelets and various cell lines. Since thrombospondins are widely distributed proteins involved in a variety of adhesive processes, this protein may have important functions as a cell adhesion molecule. It binds to collagen, thrombospondin, anionic phospholipids and oxidized LDL. It directly mediates cytoadherence of Plasmodium falciparum parasitized erythrocytes and it binds long chain fatty acids and may function in the transport and/or as a regulator of fatty acid transport. Mutations in this gene cause platelet glycoprotein deficiency. Multiple alternatively spliced transcript variants have been found for this gene.
基因ID	948
基因名	CD36
Swiss	P16671
别名	BDPLT10;CHDS7;FAT;GP3B;GP4;GPIV;PASIV;SCARB3;CD36

产品验证



Western blot analysis of CD36 expressed in Mouse lung,Rat heart,HEL using CD36 Rabbit mAb at 1:1000. Secondary antibody: HRP Goat Anti-Rabbit IgG (H+L) at 1:5000. Lysates/proteins: 30ug per lane. Blocking buffer: 5% non-fat dry milk in TBST. Detection: ECL Enhanced Kit. Exposure time: 120s.

实验步骤

访问官网浏览详情: www.ablybio.cn