

Phospho-eIF4E (S209) Rabbit mAb

货号: **AYM29531**

产品信息

反应	Human,Mouse,Rat
宿主	Rabbit
克隆性	Monoclonal
预测反应	
应用	WB IHC ICC IP
推荐浓度	WB: 1:500 - 1:2000 IHC: 1:50 - 1:200 ICC: 1:50 - 1:200 IP: 1:20 - 1:50
理论分子量	25kDa/27kDa/28kDa
实测分子量	25kDa
形式	Liquid
保存条件	Store at -20°C. Avoid freeze / thaw cycles. Buffer: PBS with 0.75% BSA,50% glycerol,pH7.3.
偶联物	Unconjugated
阳性对照	HT-29,NIH/3T3
细胞定位	Cytoplasm,P-body
纯化	Affinity purification

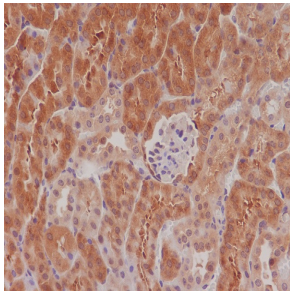
抗原信息

抗原信息	Recombinant fusion protein corresponding to Human Phospho-eIF4E (S209) .
序列	SGSTT

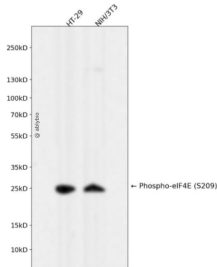
靶点信息

研究背景	The protein encoded by this gene is a component of the eukaryotic translation initiation factor 4F complex, which recognizes the 7-methylguanosine cap structure at the 5' end of messenger RNAs. The encoded protein aids in translation initiation by recruiting ribosomes to the 5'-cap structure. Association of this protein with the 4F complex is the rate-limiting step in translation initiation. This gene acts as a proto-oncogene, and its expression and activation is associated with transformation and tumorigenesis. Several pseudogenes of this gene are found on other chromosomes. Alternative splicing results in multiple transcript variants.
基因ID	1977
基因名	EIF4E
Swiss	P06730
别名	AUTS19;CBP;EIF4E1;EIF4EL1;EIF4F;eIF-4E;EIF4E

产品验证



Immunohistochemical analysis of paraffin-embedded mouse kidney, using Phospho-eIF4E (S209) antibody.



Western blot analysis of Phospho-eIF4E (S209) expressed in HT-29,NIH/3T3 using Phospho-eIF4E (S209) Rabbit mAb at 1:1000. Secondary antibody: HRP Goat Anti-Rabbit IgG (H+L) at 1:5000. Lysates/proteins: 30ug per lane. Blocking buffer: 5% non-fat dry milk in TBST. Detection: ECL Enhanced Kit. Exposure time: 120s.

实验步骤

访问官网浏览详情: www.ablybio.cn