

# MCM6 Rabbit mAb

货号: **AYM29526**

## 产品信息

反应	Human,Mouse,Rat
宿主	Rabbit
克隆性	Monoclonal
预测反应	
应用	WB IHC IF/ICC IP FC
推荐浓度	<b>WB:</b> 1:500 - 1:2000 <b>IHC:</b> 1:50 - 1:200 <b>IF/ICC:</b> 1:50 - 1:200 <b>IP:</b> 1:20 - 1:50 <b>FC:</b> 1:20 - 1:50
理论分子量	92kDa
实测分子量	93kDa
形式	Liquid
保存条件	Store at -20°C. Avoid freeze / thaw cycles. Buffer: PBS with 0.75% BSA,50% glycerol,pH7.3.
偶联物	Unconjugated
阳性对照	U-251MG,HeLa,MCF7,HL-60,NIH/3T3,Mouse spleen
细胞定位	Nucleus
纯化	Affinity purification

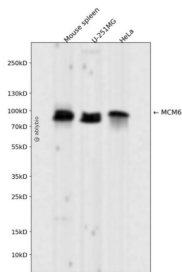
## 抗原信息

抗原信息	Recombinant fusion protein corresponding to Human MCM6.
序列	SIDRVYSLDDIRRYLLFARQFKPKISKESEDFIVEQYKHLRQRDGSVTKSSWRITVRQLESMIRLSEAMARMHCCDEVQPK HVKEAFRLLNKSIIRVETPDVNLDAQEEIQMEVDEGAGGINGHADSPAPVNGINGYNEDINQESAPKASLRLGFSEYCRISN LIVLHLRKVEEEEDSALKRSELVNWYLKEIESEIDSEELINKKRIIEKVIHRLTHYDHVLIELTQAGLKGSTEGSESYEEDPYL VVNPNYLLED

## 靶点信息

研究背景	The protein encoded by this gene is one of the highly conserved mini-chromosome maintenance proteins (MCM) that are essential for the initiation of eukaryotic genome replication. The hexameric protein complex formed by the MCM proteins is a key component of the pre-replication complex (pre_RC) and may be involved in the formation of replication forks and in the recruitment of other DNA replication related proteins. The MCM complex consisting of this protein and MCM2, 4 and 7 proteins possesses DNA helicase activity, and may act as a DNA unwinding enzyme. The phosphorylation of the complex by CDC2 kinase reduces the helicase activity, suggesting a role in the regulation of DNA replication. Single nucleotide polymorphisms in the intron regions of this gene are associated with differential transcriptional activation of the promoter of the neighboring lactase gene and, thereby, influence lactose intolerance in early adulthood.
基因ID	4175
基因名	MCM6
Swiss	Q14566
别名	MCM6;MCG40308;Mis5;P105MCM

## 产品验证



Western blot analysis of MCM6 expressed in Mouse spleen,U-251MG,HeLa using MCM6 Rabbit mAb at 1:1000. Secondary antibody: HRP Goat Anti-Rabbit IgG (H+L) at 1:5000. Lysates/proteins: 30ug per lane. Blocking buffer: 5% non-fat dry milk in TBST. Detection: ECL Enhanced Kit. Exposure time: 120s.

## 实验步骤

访问官网浏览详情: [www.ablybio.cn](http://www.ablybio.cn)