

Cyclophilin 40 Rabbit mAb

货号: **AYM29525**

产品信息

反应	Human,Mouse,Rat
宿主	Rabbit
克隆性	Monoclonal
预测反应	
应用	WB IHC IF/ICC FC
推荐浓度	WB: 1:500 - 1:2000 IHC: 1:50 - 1:200 IF/ICC: 1:50 - 1:200 FC: 1:20 - 1:50
理论分子量	41kDa
实测分子量	41kDa
形式	Liquid
保存条件	Store at -20°C. Avoid freeze / thaw cycles. Buffer: PBS with 0.75% BSA,50% glycerol,pH7.3.
偶联物	Unconjugated
阳性对照	NIH/3T3,Jurkat,C6,Mouse brain,Rat brain
细胞定位	Cytoplasm,Nucleus,nucleolus,nucleoplasm
纯化	Affinity purification

抗原信息

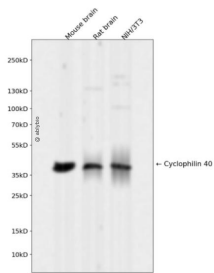
抗原信息	Recombinant fusion protein corresponding to Human Cyclophilin 40.
序列	IALSCVLNIGACKLKMSNWQGAIDSCLEALELDPSNTKALYRRAQGWQGLKEYDQALADLKKAQGIAPEDKAIQAELLKVK QKIKAQKDKEKAVYAKMFA

靶点信息

研究背景	The protein encoded by this gene is a member of the peptidyl-prolyl cis-trans isomerase (PPIase) family. PPIases catalyze the cis-trans isomerization of proline imidic peptide bonds in oligopeptides and accelerate the folding of proteins. This protein has been shown to possess PPIase activity and, similar to other family members, can bind to the immunosuppressant cyclosporin A. [provided by RefSeq, Jul 2008]
------	---

基因ID	5481
基因名	PPID
Swiss	Q08752
别名	CYP-40; CYPD

产品验证



Western blot analysis of Cyclophilin 40 expressed in Mouse brain, Rat brain, NIH/3T3 using Cyclophilin 40 Rabbit mAb at 1:1000. Secondary antibody: HRP Goat Anti-Rabbit IgG (H+L) at 1:5000. Lysates/proteins: 30ug per lane. Blocking buffer: 5% non-fat dry milk in TBST. Detection: ECL Enhanced Kit. Exposure time: 120s.

实验步骤

访问官网浏览详情: www.ablybio.cn