

BCLG Rabbit mAb

货号: **AYM29520**

产品信息

反应	Human,Mouse,Rat
宿主	Rabbit
克隆性	Monoclonal
预测反应	
应用	WB IHC IF/ICC IP FC
推荐浓度	WB: 1:500 - 1:2000 IHC: 1:50 - 1:200 IF/ICC: 1:50 - 1:200 IP: 1:20 - 1:50 FC: 1:20 - 1:50
理论分子量	28kDa/30kDa/36kDa
实测分子量	40kDa
形式	Liquid
保存条件	Store at -20°C. Avoid freeze / thaw cycles. Buffer: PBS with 0.75% BSA,50% glycerol,pH7.3.
偶联物	Unconjugated
阳性对照	Mouse liver,Rat liver,Rat brain
细胞定位	Cytoplasm,Endomembrane system,cytosol
纯化	Affinity purification

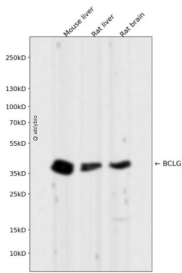
抗原信息

抗原信息	Recombinant fusion protein corresponding to Human BCLG.
序列	MCSTSGCDLEEIPLDDDDLNTIEFKILAYYTRHHVFKSTPALFSPKLLRTRLSLSQRGLGNCANESWTEVSWPCRNSQSSE KAINLGKKKSSWKAFFGVVEKEDSQSTPAKVSAQGQRTLEYQDSHSQQWSRCLSNVEQCLEHEAVDPKVISIANRVAEIV YSWPPPQATQAGGFKSKEIFVTEGLSFQLQGHVPVASSSKKDEEEQILAKIVELLKYSQDQLERKLLKDKALMGHFQDGL SYSVFKTITDQVLMGVDPGRGESEVKAQGFKAALVIDVTAKLTAINHPMNRVLFVGFQKYLKENFSPWQQHGGWEKILGIS HEEVD

靶点信息

研究背景	The protein encoded by this gene belongs to the BCL2 protein family. BCL2 family members form hetero- or homodimers and act as anti- or pro-apoptotic regulators that are involved in a wide variety of cellular activities. Overexpression of this gene has been shown to induce apoptosis in cells. Three alternatively spliced transcript variants encoding two distinct isoforms have been reported for this gene.
基因ID	79370
基因名	BCL2L14
Swiss	Q9BZR8
别名	BCL2L14;BCLG

产品验证



Western blot analysis of BCLG expressed in Mouse liver,Rat liver,Rat brain using BCLG Rabbit mAb at 1:1000. Secondary antibody: HRP Goat Anti-Rabbit IgG (H+L) at 1:5000. Lysates/proteins: 30ug per lane. Blocking buffer: 5% non-fat dry milk in TBST. Detection: ECL Enhanced Kit. Exposure time: 120s.

实验步骤

访问官网浏览详情: www.ablybio.cn