

# Cytochrome P450 2D6 Rabbit mAb

货号: **AYM29516**

## 产品信息

反应	Human
宿主	Rabbit
克隆性	Monoclonal
预测反应	
应用	WB IHC IF/ICC FC
推荐浓度	<b>WB:</b> 1:500 - 1:2000 <b>IHC:</b> 1:50 - 1:200 <b>IF/ICC:</b> 1:50 - 1:200 <b>FC:</b> 1:20 - 1:50
理论分子量	50,55,80kDa
实测分子量	50,55,80kDa
形式	Liquid
保存条件	Store at -20°C. Avoid freeze / thaw cycles. Buffer: PBS with 0.75% BSA,50% glycerol,pH7.3.
偶联物	Unconjugated
阳性对照	HT-29,293T,HepG2,Mouse liver,Rat liver
细胞定位	Endoplasmic reticulum membrane, Microsome membrane, Peripheral membrane protein
纯化	Affinity purification

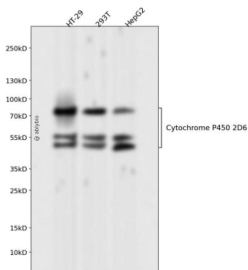
## 抗原信息

抗原信息	Recombinant fusion protein corresponding to Human Cytochrome P450 2D6.
序列	QVRRPEMGDQAHMPYTTAVIHEVQRFQDIVPLGVTHMTRDIEVQGFRIKGTTLITNLSSVLKDEAVWEKPFRRHPEHFL DAQGHFVKPEAFLPFSAGRRACLGEPLARMELFFFTSLLQHFQSVPTGQPRPSHHGVFAFLVSPSPYELCAVPR

## 靶点信息

研究背景	This gene encodes a member of the cytochrome P450 superfamily of enzymes. The cytochrome P450 proteins are monooxygenases which catalyze many reactions involved in drug metabolism and synthesis of cholesterol, steroids and other lipids. This protein localizes to the endoplasmic reticulum and is known to metabolize as many as 25% of commonly prescribed drugs. Its substrates include antidepressants, antipsychotics, analgesics and antitussives, beta adrenergic blocking agents, antiarrhythmics and antiemetics. The gene is highly polymorphic in the human population; certain alleles result in the poor metabolizer phenotype, characterized by a decreased ability to metabolize the enzyme's substrates. Some individuals with the poor metabolizer phenotype have no functional protein since they carry 2 null alleles whereas in other individuals the gene is absent. This gene can vary in copy number and individuals with the ultrarapid metabolizer phenotype can have 3 or more active copies of the gene. Alternatively spliced transcript variants encoding different isoforms have been found for this gene. [provided by RefSeq, Jul 2014]
基因ID	1565
基因名	CYP2D6
Swiss	P10635
别名	CPD6; CYP2D; CYP2D7AP; CYP2D7BP; CYP2D7P2; CYP2D8P2; CYP2DL1; CYP1ID6; P450-DB1; P450C2D; P450DB1

## 产品验证



Western blot analysis of Cytochrome P450 2D6 expressed in HT-29, 293T, HepG2 using Cytochrome P450 2D6 Rabbit mAb at 1:1000. Secondary antibody: HRP Goat Anti-Rabbit IgG (H+L) at 1:500. Lysates/proteins: 30ug per lane. Blocking buffer: 5% non-fat dry milk in TBST. Detection: ECL Enhanced Kit. Exposure time: 120s.

## 实验步骤

访问官网浏览详情: [www.ablybio.cn](http://www.ablybio.cn)