

CRALBP Rabbit mAb

货号: **AYM29513**

产品信息

反应	Mouse,Rat
宿主	Rabbit
克隆性	Monoclonal
预测反应	
应用	WB IP
推荐浓度	WB: 1:500 - 1:2000 IP: 1:20 - 1:50
理论分子量	36kDa
实测分子量	36kDa
形式	Liquid
保存条件	Store at -20°C. Avoid freeze / thaw cycles. Buffer: PBS with 0.75% BSA,50% glycerol,pH7.3.
偶联物	Unconjugated
阳性对照	Mouse eye,Rat eye,Rat brain
细胞定位	Cytoplasm
纯化	Affinity purification

抗原信息

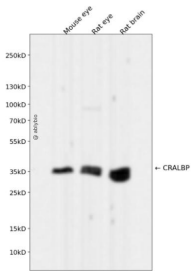
抗原信息	Recombinant fusion protein corresponding to Mouse CRALBP.
序列	MSEGVGTFRMVPEEEQELRAQLEQLTTKDHGPFVFGPCSQLPRHTLQKAKDELNEREETREEAVRELQEMVQAQAASGEE LAVAVAERVQEKDSGFFLRFIRARKFNVGRAYELLRGYVNFRLQYPELFDLSPEAVRCTIEAGYPGLSSRDKYGRVVMLF NIENWQSQEITFDEILQAYCFILEKLLENEETQINGFCIIENFKGFTMQQAASLRSDLRKMVDMLQDSFPARFKAIHFIHQ WYFTTTYNVVKPFLKSKLLERVFVHGDDLSGFYQEIDENILPSDFGGTLPKYDGKAVAEQLFGPQAQAENTAF

靶点信息

研究背景	The protein encoded by this gene is a 36-kD water-soluble protein which carries 11-cis-retinaldehyde or 11-cis-retinal as physiologic ligands. It may be a functional component of the visual cycle. Mutations of this gene have been associated with severe rod-cone dystrophy, Bothnia dystrophy (nonsyndromic autosomal recessive retinitis pigmentosa) and retinitis punctata albescens.
------	--

基因ID	6017
基因名	RLBP1
Swiss	P12271
别名	RLBP1;CRALBP

产品验证



Western blot analysis of CRALBP expressed in Mouse eye,Rat eye,Rat brain using CRALBP Rabbit mAb at 1:1000. Secondary antibody: HRP Goat Anti-Rabbit IgG (H+L) at 1:5000. Lysates/proteins: 30ug per lane. Blocking buffer: 5% non-fat dry milk in TBST. Detection: ECL Enhanced Kit. Exposure time: 120s.

实验步骤

访问官网浏览详情: www.ablybio.cn