

BST2 Rabbit mAb

货号: **AYM29500**

产品信息

反应	Human
宿主	Rabbit
克隆性	Monoclonal
预测反应	
应用	WB IHC FC
推荐浓度	WB: 1:500 - 1:2000 IHC: 1:50 - 1:200 FC: 1:20 - 1:50
理论分子量	18kDa/19kDa
实测分子量	28-40kDa
形式	Liquid
保存条件	Store at -20°C. Avoid freeze / thaw cycles. Buffer: PBS with 0.75% BSA,50% glycerol,pH7.3.
偶联物	Unconjugated
阳性对照	LO2,HeLa,Mouse heart
细胞定位	Apical cell membrane,Cell membrane,Cytoplasm,GPI-anchor,Golgi apparatus,Late endosome,Lipid-anchor,Membrane raft,Single-pass type II membrane protein,trans-Golgi network
纯化	Affinity purification

抗原信息

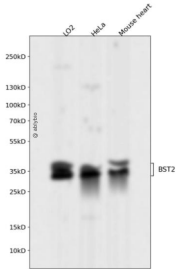
抗原信息	Recombinant fusion protein corresponding to Human BST2.
序列	NSEACRDGLRAVMECRNVTHLLQQELTEAQKGFQDVEAQAATCNHTVMALMASLDAEKAQGQKKVEELEGITTLNHLKQDASAEVERLRRENQVLSVRIADKKYYPSSQDSS

靶点信息

研究背景	Bone marrow stromal cells are involved in the growth and development of B-cells. The specific function of the protein encoded by the bone marrow stromal cell antigen 2 is undetermined; however, this protein may play a role in pre-B-cell growth and in rheumatoid arthritis.
基因ID	684

基因名	BST2
Swiss	Q10589
别名	BST2;CD317;TETHERIN

产品验证



Western blot analysis of BST2 expressed in LO2, HeLa, Mouse heart using BST2 Rabbit mAb at 1:1000. Secondary antibody: HRP Goat Anti-Rabbit IgG (H+L) at 1:5000. Lysates/proteins: 30ug per lane. Blocking buffer: 5% non-fat dry milk in TBST. Detection: ECL Enhanced Kit. Exposure time: 120s.

实验步骤

访问官网浏览详情: www.ablybio.cn