

SEC23 Rabbit mAb

货号: **AYM29474**

产品信息

| | |
|-------|---|
| 反应 | Human |
| 宿主 | Rabbit |
| 克隆性 | Monoclonal |
| 预测反应 | |
| 应用 | WB FC |
| 推荐浓度 | WB: 1:500 - 1:2000 FC: 1:20 - 1:50 |
| 理论分子量 | 63kDa/86kDa |
| 实测分子量 | 86kDa |
| 形式 | Liquid |
| 保存条件 | Store at -20°C. Avoid freeze / thaw cycles. Buffer: PBS with 0.75% BSA, 50% glycerol, pH7.3. |
| 偶联物 | Unconjugated |
| 阳性对照 | B cells, LO2, HeLa, SGC-7901, HT-29, Mouse brain, Mouse liver, Rat brain |
| 细胞定位 | Golgi apparatus membrane, Peripheral membrane protein, Smooth endoplasmic reticulum membrane |
| 纯化 | Affinity purification |

抗原信息

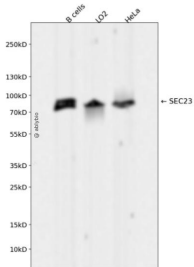
| | |
|------|---|
| 抗原信息 | Recombinant fusion protein corresponding to Human SEC23. |
| 序列 | MTTYLEFIQQNEERDGVRFVSWNVWPSSRLEATRMVVPVAALFTPLKERPDLPPIQYEPVLCSTRTCRAVLNPLCQVDYRAK LWACNFCYQRNQFPFSYAGISELNQPAELLQFSSIEYVVLRGPMPLIFLYVVDTCMEDEDLQALKES |

靶点信息

| | |
|------|--|
| 研究背景 | The protein encoded by this gene is a member of the SEC23 subfamily of the SEC23/SEC24 family. It is part of a protein complex and found in the ribosome-free transitional face of the endoplasmic reticulum (ER) and associated vesicles. This protein has similarity to yeast Sec23p component of COPII. COPII is the coat protein complex responsible for vesicle budding from the ER. The encoded protein is suggested to play a role in the ER-Golgi protein trafficking. |
| 基因ID | 10484 |

| | |
|-------|-------------|
| 基因名 | SEC23A |
| Swiss | Q15436 |
| 别名 | SEC23A;CLSD |

产品验证



Western blot analysis of SEC23 expressed in B cells, LO2, HeLa using SEC23 Rabbit mAb at 1:1000. Secondary antibody: HRP Goat Anti-Rabbit IgG (H+L) at 1:5000. Lysates/proteins: 30ug per lane. Blocking buffer: 5% non-fat dry milk in TBST. Detection: ECL Enhanced Kit. Exposure time: 120s.

实验步骤

访问官网浏览详情: www.ablybio.cn