

TMEFF2 Rabbit mAb

货号: **AYM29471**

产品信息

反应	Human
宿主	Rabbit
克隆性	Monoclonal
预测反应	
应用	WB IHC IF/ICC FC
推荐浓度	WB: 1:500 - 1:2000 IHC: 1:50 - 1:200 IF/ICC: 1:50 - 1:200 FC: 1:20 - 1:50
理论分子量	41kDa
实测分子量	41kDa
形式	Liquid
保存条件	Store at -20°C. Avoid freeze / thaw cycles. Buffer: PBS with 0.75% BSA,50% glycerol,pH7.3.
偶联物	Unconjugated
阳性对照	HeLa,PC-3,SH-SY5Y,Rat testis
细胞定位	basement membrane,extracellular region,plasma membrane
纯化	Affinity purification

抗原信息

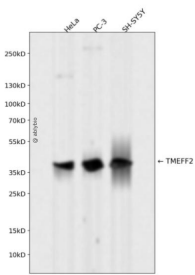
抗原信息	Recombinant fusion protein corresponding to Human TMEFF2.
序列	HGKCEHSINMQEPSCRC DAGYTGQHCEKDYSLVYVPGPVRFYVLIAAVIGTIQIAVICVVVLCITRKCPRSNRIHRQKQN TGHYSSDNTTRASTRLI

靶点信息

研究背景	This gene encodes a member of the tomoregulin family of transmembrane proteins. This protein has been shown to function as both an oncogene and a tumor suppressor depending on the cellular context and may regulate prostate cancer cell invasion. Multiple soluble forms of this protein have been identified that arise from both an alternative splice variant and ectodomain shedding. Additionally, this gene has been found to be hypermethylated in multiple cancer types. Alternative splicing results in multiple transcript variants. [provided by RefSeq, Feb 2015]
------	--

基因ID	23671
基因名	TMEFF2
Swiss	Q9UIK5
别名	CT120.2; HPP1; TENB2; TPEF; TR; TR-2

产品验证



Western blot analysis of TMEFF2 expressed in HeLa, PC-3, SH-SY5Y using TMEFF2 Rabbit mAb at 1:1000. Secondary antibody: HRP Goat Anti-Rabbit IgG (H+L) at 1:5000. Lysates/proteins: 30ug per lane. Blocking buffer: 5% non-fat dry milk in TBST. Detection: ECL Enhanced Kit. Exposure time: 120s.

实验步骤

访问官网浏览详情: www.ablybio.cn