

Myosin heavy chain Rabbit mAb

货号: **AYM29462**

产品信息

反应	Human,Mouse,Rat
宿主	Rabbit
克隆性	Monoclonal
预测反应	
应用	WB IHC
推荐浓度	WB: 1:500 - 1:2000 IHC: 1:50 - 1:200
理论分子量	224kDa
实测分子量	224kDa
形式	Liquid
保存条件	Store at -20°C. Avoid freeze / thaw cycles. Buffer: PBS with 0.75% BSA,50% glycerol,pH7.3.
偶联物	Unconjugated
阳性对照	Mouse lung,Mouse skeletal muscle,Rat heart
细胞定位	Cytoplasm,myofibril
纯化	Affinity purification

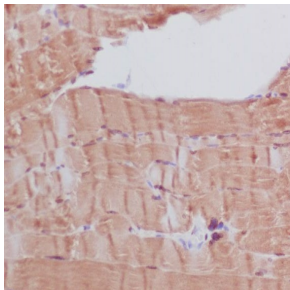
抗原信息

抗原信息	Recombinant fusion protein corresponding to Human Myosin heavy chain.
序列	VAELGEQIDNLQRVKQKLEKEKSEFKLELDDVTSNMEQIIKAKANLEKMCRTLEDQMNEHRSKAETQRSVNDLTSQRAKL QTENGELSRQLDEKEALISQLTRGKLYTQQLDLKRLQLEEVKAKNALAHALQSARHDCDLLREQYEEETEAKAELQRVL SKANSEVAQWRTKYETDAIQRTEELEEAKKKLAQRLQEA

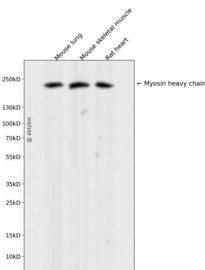
靶点信息

研究背景	Muscle myosin is a hexameric protein containing 2 heavy chain subunits, 2 alkali light chain subunits, and 2 regulatory light chain subunits. This gene encodes the beta (or slow) heavy chain subunit of cardiac myosin. It is expressed predominantly in normal human ventricle. It is also expressed in skeletal muscle tissues rich in slow-twitch type I muscle fibers. Changes in the relative abundance of this protein and the alpha (or fast) heavy subunit of cardiac myosin correlate with the contractile velocity of cardiac muscle. Its expression is also altered during thyroid hormone depletion and hemodynamic overloading. Mutations in this gene are associated with familial hypertrophic cardiomyopathy, myosin storage myopathy, dilated cardiomyopathy, and Laing early-onset distal myopathy. [provided by RefSeq, Jul 2008]
基因ID	4625,4624
基因名	MYH7,MYH6
Swiss	P12883/P13533
别名	CMD1S; CMH1; MPD1; MYHCB; SPMD; SPMM

产品验证



Immunohistochemical analysis of paraffin-embedded human skeletal muscle, using Myosin heavy chain Antibody.



Western blot analysis of Myosin heavy chain expressed in Mouse lung, Mouse skeletal muscle, Rat heart using Myosin heavy chain Rabbit mAb at 1:1000. Secondary antibody: HRP Goat Anti-Rabbit IgG (H+L) at 1:5000. Lysates/proteins: 30ug per lane. Blocking buffer: 5% non-fat dry milk in TBST. Detection: ECL Enhanced Kit. Exposure time: 120s.

实验步骤

访问官网浏览详情: www.ablybio.cn