

CRM1 Rabbit mAb

货号: **AYM29461**

产品信息

反应	Human,Mouse,Rat
宿主	Rabbit
克隆性	Monoclonal
预测反应	
应用	WB IHC IF/ICC FC
推荐浓度	WB: 1:500 - 1:2000 IHC: 1:50 - 1:200 IF/ICC: 1:50 - 1:200 FC: 1:20 - 1:50
理论分子量	123kDa
实测分子量	110kDa
形式	Liquid
保存条件	Store at -20°C. Avoid freeze / thaw cycles. Buffer: PBS with 0.75% BSA,50% glycerol,pH7.3.
偶联物	Unconjugated
阳性对照	HeLa,MCF7,RAW264.7,U-251MG
细胞定位	Cajal body,Cytoplasm,Nucleus,nucleolus,nucleoplasm
纯化	Affinity purification

抗原信息

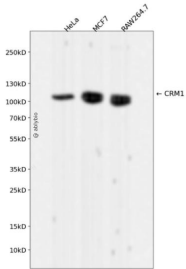
抗原信息	Recombinant fusion protein corresponding to Human CRM1.
序列	GLFSLNQDIPAFKEHLRDFLVQIKEFAGEDTSDLFLEEREIALRQADEEKHKRQMSVPGIFNPHEIPEEMCD

靶点信息

研究背景	This cell-cycle-regulated gene encodes a protein that mediates leucine-rich nuclear export signal (NES)-dependent protein transport. The protein specifically inhibits the nuclear export of Rev and U snRNAs. It is involved in the control of several cellular processes by controlling the localization of cyclin B, MPAK, and MAPKAP kinase 2. This protein also regulates NFAT and AP-1.
基因ID	7514

基因名	XPO1
Swiss	O14980
别名	CRM1;emb;exp1;XPO1

产品验证



Western blot analysis of CRM1 expressed in HeLa, MCF7, RAW264.7 using CRM1 Rabbit mAb at 1:1000. Secondary antibody: HRP Goat Anti-Rabbit IgG (H+L) at 1:5000. Lysates/proteins: 30ug per lane. Blocking buffer: 5% non-fat dry milk in TBST. Detection: ECL Enhanced Kit. Exposure time: 120s.

实验步骤

访问官网浏览详情: www.ablybio.cn