

K63-linkage Specific Ubiquitin Rabbit mAb

货号: AYM29458

产品信息

反应	Human,Mouse,Rat
宿主	Rabbit
克隆性	Monoclonal
预测反应	
应用	WB IHC IF/ICC FC
推荐浓度	WB: 1:500 - 1:2000 IHC: 1:50 - 1:200 IF/ICC: 1:50 - 1:200 FC: 1:20 - 1:50
理论分子量	8kDa
实测分子量	15-300kDa
形式	Liquid
保存条件	Store at -20°C. Avoid freeze / thaw cycles. Buffer: PBS with 0.75% BSA,50% glycerol,pH7.3.
偶联物	Unconjugated
阳性对照	HeLa,NIH/3T3,C6
细胞定位	Cytoplasm,Nucleus
纯化	Affinity purification

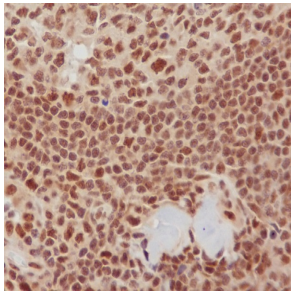
抗原信息

抗原信息	Recombinant fusion protein corresponding to Human K63-linkage Specific Ubiquitin.
序列	MQIFVKTLTGKTITLEVEPSDTIENVKAKIQDKEGIPPDQQRLLIFAGKQLEDGRTLSDYNIQKESTLHLVLRRLRGGMQIFVKLT TGKTITLEVEPSDTIENVKAKIQDKEGIPPDQQRLLIFAGKQLEDGRTLSDYNIQKESTLHLVLRRLRGGMQIFVKLTGKTITLE VEPSDTIENVKAKIQDKEGIPPDQQRLLIFAGKQLEDGRTLSDYNIQKESTLHLVLRRLRGG

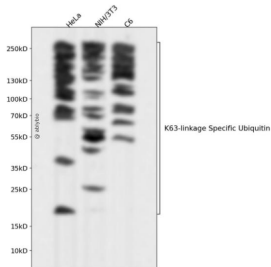
靶点信息

研究背景	This gene encodes ubiquitin, one of the most conserved proteins known. Ubiquitin has a major role in targeting cellular proteins for degradation by the 26S proteasome. It is also involved in the maintenance of chromatin structure, the regulation of gene expression, and the stress response. Ubiquitin is synthesized as a precursor protein consisting of either polyubiquitin chains or a single ubiquitin moiety fused to an unrelated protein. This gene consists of three direct repeats of the ubiquitin coding sequence with no spacer sequence. Consequently, the protein is expressed as a polyubiquitin precursor with a final amino acid after the last repeat. An aberrant form of this protein has been detected in patients with Alzheimer's disease and Down syndrome. Pseudogenes of this gene are located on chromosomes 1, 2, 13, and 17. Alternative splicing results in multiple transcript variants. [provided by RefSeq, Aug 2013]
基因ID	7314
基因名	UBB
Swiss	POCG47
别名	HEL-S-50;Ubiquitin;UBB

产品验证



Immunohistochemical analysis of paraffin-embedded human tonsil, using K63-linkage Specific Ubiquitin Antibody.



Western blot analysis of K63-linkage Specific Ubiquitin expressed in HeLa, NIH/3T3, C6 using K63-linkage Specific Ubiquitin Rabbit mAb at 1:1000. Secondary antibody: HRP Goat Anti-Rabbit Ig G (H+L) at 1:5000. Lysates/proteins: 30ug per lane. Blocking buffer: 5% non-fat dry milk in TBS T. Detection: ECL Enhanced Kit. Exposure time: 120s.

实验步骤

访问官网浏览详情: www.ablybio.cn