

IKK alpha+beta Rabbit mAb

货号: **AYM29453**

产品信息

反应	Human,Mouse,Rat
宿主	Rabbit
克隆性	Monoclonal
预测反应	
应用	WB IF/ICC IP
推荐浓度	WB: 1:500 - 1:2000 IF/ICC: 1:50 - 1:200 IP: 1:20 - 1:50
理论分子量	29kDa/79kDa/85kDa/86kDa
实测分子量	85,87kDa
形式	Liquid
保存条件	Store at -20°C. Avoid freeze / thaw cycles. Buffer: PBS with 0.75% BSA,50% glycerol,pH7.3.
偶联物	Unconjugated
阳性对照	Mouse spleen
细胞定位	Cytoplasm,Membrane raft,Nucleus
纯化	Affinity purification

抗原信息

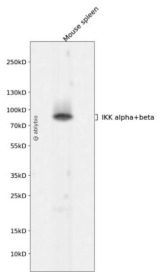
抗原信息	Recombinant fusion protein corresponding to Human IKK alpha+beta.
序列	QTEFGITSDKLLLAWREMEQAVELCGRENEVKLLVERMMALQTDIVDLQRSPMGRKQGGTLDDLEEQARELYRRLREKPR DQRTEGDSQEMVRLLLQAIQS

靶点信息

研究背景	The protein encoded by this gene phosphorylates the inhibitor in the inhibitor/NF-kappa-B complex, causing dissociation of the inhibitor and activation of NF-kappa-B. The encoded protein itself is found in a complex of proteins. Several transcript variants, some protein-coding and some not, have been found for this gene.
基因ID	3551

基因名	IKBKB
Swiss	O14920
别名	IKBKB;IKK-beta;IKK2;IKKB;IMD15;NFKBIKB;IKK beta

产品验证



Western blot analysis of IKK alpha+beta expressed in Mouse spleen using IKK alpha+beta Rabbit mAb at 1:1000. Secondary antibody: HRP Goat Anti-Rabbit IgG (H+L) at 1:5000. Lysates/proteins: 30ug per lane. Blocking buffer: 5% non-fat dry milk in TBST. Detection: ECL Enhanced Kit. Exposure time: 120s.

实验步骤

访问官网浏览详情: www.ablybio.cn