

BAF57/SMARCE1 Rabbit mAb

货号: **AYM29450**

产品信息

反应	Human,Mouse,Rat
宿主	Rabbit
克隆性	Monoclonal
预测反应	
应用	WB IHC IF/ICC IP
推荐浓度	WB: 1:500 - 1:2000 IHC: 1:50 - 1:200 IF/ICC: 1:50 - 1:200 IP: 1:20 - 1:50
理论分子量	34kDa/37kDa/39kDa/41kDa/42kDa/46kDa
实测分子量	57kDa
形式	Liquid
保存条件	Store at -20°C. Avoid freeze / thaw cycles. Buffer: PBS with 0.75% BSA,50% glycerol,pH7.3.
偶联物	Unconjugated
阳性对照	293T
细胞定位	Nucleus
纯化	Affinity purification

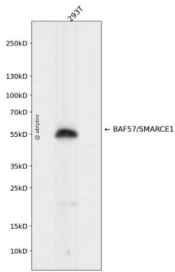
抗原信息

抗原信息	Recombinant fusion protein corresponding to Human BAF57/SMARCE1.
序列	MSKRPSYAPPPTPAPATQMPSTPGFVGYNPYSHLAYNNYRLGGNPGTNSRVTASSGITIPKPPKPPDKPLMPYMRYSRKV WDQVKASNPDLKLWEIGKIIGGMWRDLTDEEKQEYLNEYEAKEIYNESMKAYHNSPAYLAYINAKSRAEAALEESRQRQ SRMEKGEPYMSIQPAEDPDDYDDGFSMKHTATARFQRNHRLLISEILSESVVPDVRVVTARMQVLKRQVQSLMVHQRK LEAELLQIEERHQEKRRKFLSTDSFNNELKRLCGLKVEVDMEKIAAEIAQAEQARKRQEEREKEAAEQAERSQSSIVPEEE QAANKGEEKKDDENIPMETEETHLEETTESQQNGEETSTPEDKESGQEGVDSMAEEGTSNTGSESNSATVEEPPTD PIPEDEKKE

靶点信息

研究背景	The protein encoded by this gene is part of the large ATP-dependent chromatin remodeling complex SWI/SNF, which is required for transcriptional activation of genes normally repressed by chromatin. The encoded protein, either alone or when in the SWI/SNF complex, can bind to 4-way junction DNA, which is thought to mimic the topology of DNA as it enters or exits the nucleosome. The protein contains a DNA-binding HMG domain, but disruption of this domain does not abolish the DNA-binding or nucleosome-displacement activities of the SWI/SNF complex. Unlike most of the SWI/SNF complex proteins, this protein has no yeast counterpart.
基因ID	6605
基因名	SMARCE1
Swiss	Q969G3
别名	SMARCE1;BAF57;CSS5

产品验证



Western blot analysis of BAF57/SMARCE1 expressed in 293T using BAF57/SMARCE1 Rabbit mAb at 1:1000. Secondary antibody: HRP Goat Anti-Rabbit IgG (H+L) at 1:5000. Lysates/proteins: 30ug per lane. Blocking buffer: 5% non-fat dry milk in TBST. Detection: ECL Enhanced Kit. Exposure time: 120s.

实验步骤

访问官网浏览详情: www.ablybio.cn