

CCR7 Rabbit mAb

货号: **AYM29448**

产品信息

| | |
|-------|--|
| 反应 | Human,Mouse,Rat |
| 宿主 | Rabbit |
| 克隆性 | Monoclonal |
| 预测反应 | |
| 应用 | WB IHC IF/ICC IP |
| 推荐浓度 | WB: 1:500 - 1:2000 IHC: 1:50 - 1:200 IF/ICC: 1:50 - 1:200 IP: 1:20 - 1:50 |
| 理论分子量 | 43kDa |
| 实测分子量 | 43kDa |
| 形式 | Liquid |
| 保存条件 | Store at -20°C. Avoid freeze / thaw cycles. Buffer: PBS with 0.75% BSA,50% glycerol,pH7.3. |
| 偶联物 | Unconjugated |
| 阳性对照 | A-549,Jurkat,C6,Mouse lung,Mouse spleen,Rat lung |
| 细胞定位 | Cell membrane,Multi-pass membrane protein |
| 纯化 | Affinity purification |

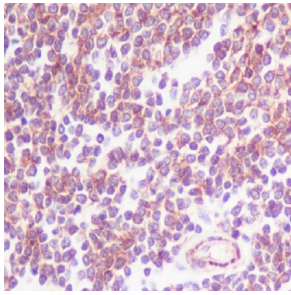
抗原信息

| | |
|------|---|
| 抗原信息 | Recombinant fusion protein corresponding to Human CCR7. |
| 序列 | MDLGKPMKSVLVVALLVIFQVCLCQDEVTDYIGDNTTVDYTLFESLCSKDKVRNFKAWFLPIMYSIICFVGLLGNGLVVLT YIYFKRLKTMDDTYLLNL |

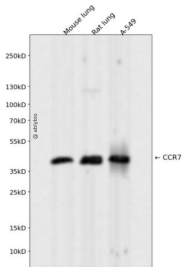
靶点信息

| | |
|-------|--|
| 研究背景 | The protein encoded by this gene is a member of the G protein-coupled receptor family. This receptor was identified as a gene induced by the Epstein-Barr virus (EBV), and is thought to be a mediator of EBV effects on B lymphocytes. This receptor is expressed in various lymphoid tissues and activates B and T lymphocytes. It has been shown to control the migration of memory T cells to inflamed tissues, as well as stimulate dendritic cell maturation. The chemokine (C-C motif) ligand 19 (CCL19/ECL) has been reported to be a specific ligand of this receptor. Signals mediated by this receptor regulate T cell homeostasis in lymph nodes, and may also function in the activation and polarization of T cells, and in chronic inflammation pathogenesis. Alternative splicing of this gene results in multiple transcript variants. [provided by RefSeq, Sep 2014] |
| 基因ID | 1236 |
| 基因名 | CCR7 |
| Swiss | P32248 |
| 别名 | BLR2; CC-CKR-7; CCR-7; CD197; CDw197; CMKBR7; EBI1 |

产品验证



Immunohistochemical analysis of paraffin-embedded human spleen, using CCR7 Antibody.



Western blot analysis of CCR7 expressed in Mouse lung, Rat lung, A-549 using CCR7 Rabbit mAb at 1:1000. Secondary antibody: HRP Goat Anti-Rabbit IgG (H+L) at 1:5000. Lysates/proteins: 30 ug per lane. Blocking buffer: 5% non-fat dry milk in TBST. Detection: ECL Enhanced Kit. Exposure time: 120s.

实验步骤

访问官网浏览详情: www.ablybio.cn