

# CTRL Rabbit mAb

货号: **AYM29442**

## 产品信息

反应	Human,Mouse,Rat
宿主	Rabbit
克隆性	Monoclonal
预测反应	
应用	<a href="#">WB</a>
推荐浓度	<b>WB:</b> 1:500 - 1:2000
理论分子量	24,28kDa
实测分子量	24,28kDa
形式	Liquid
保存条件	Store at -20°C. Avoid freeze / thaw cycles. Buffer: PBS with 0.75% BSA,50% glycerol,pH7.3.
偶联物	Unconjugated
阳性对照	Mouse pancreas,Rat pancreas
细胞定位	extracellular space
纯化	Affinity purification

## 抗原信息

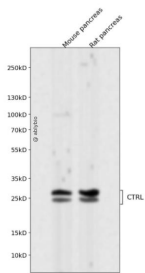
抗原信息	Recombinant fusion protein corresponding to Human CTRL.
序列	GVGNVTPAHLQQUALPLVTNQCRCQYWSSITDSMICAGGAGASSCQGDSSGGLVCQKGNTWVLIGIVSWGTKNCNV RAPAVYTRVSKFSTWINQVIAYN

## 靶点信息

研究背景	This gene encodes a serine-type endopeptidase with chymotrypsin- and elastase-2-like activities. The gene encoding this zymogen is expressed specifically in the pancreas and likely functions as a digestive enzyme. [provided by RefSeq, Sep 2016]
基因ID	1506
基因名	CTRL

Swiss	P40313
别名	CTRL1

## 产品验证



Western blot analysis of CTRL1 expressed in Mouse pancreas, Rat pancreas using CTRL1 Rabbit mAb at 1:10 00. Secondary antibody: HRP Goat Anti-Rabbit IgG (H+L) at 1:5000. Lysates/proteins: 30ug per lane. Blocking buffer: 5% non-fat dry milk in TBST. Detection: ECL Enhanced Kit. Exposure time: 120s.

## 实验步骤

访问官网浏览详情: [www.ablybio.cn](http://www.ablybio.cn)