

Lactoferrin Rabbit mAb

货号: **AYM29441**

产品信息

反应	Human
宿主	Rabbit
克隆性	Monoclonal
预测反应	
应用	WB IF/ICC IP
推荐浓度	WB: 1:500 - 1:2000 IF/ICC: 1:50 - 1:200 IP: 1:20 - 1:50
理论分子量	73kDa/78kDa
实测分子量	85kDa
形式	Liquid
保存条件	Store at -20°C. Avoid freeze / thaw cycles. Buffer: PBS with 0.75% BSA,50% glycerol,pH7.3.
偶联物	Unconjugated
阳性对照	Rat lung
细胞定位	Cytoplasm,Cytoplasmic granule,Nucleus,Secreted
纯化	Affinity purification

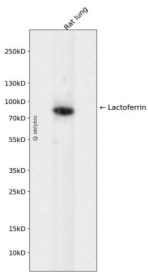
抗原信息

抗原信息	Recombinant fusion protein corresponding to Human Lactoferrin.
序列	GSCKFDEYFSQSCAPGSDPRSNLCALCIGDEQGENKCVPNSEYGGYTGAFRCLAENAGDVAFVKDVTVLQNTDGNN NEAWAKDLKLADFALLCLDGRKPVTEARSCHLAMAPNHAVVSRMDKVERLKQVLLHQAKFGRNGSDCPDKFCLFQS ETKNLLFNDNTECLARLHGKTTYEKYLGPPYVAGITNLKKCSTSPLEACEFLRK

靶点信息

研究背景	This gene is a member of the transferrin family of genes and its protein product is found in the secondary granules of neutrophils. The protein is a major iron-binding protein in milk and body secretions with an antimicrobial activity, making it an important component of the non-specific immune system. The protein demonstrates a broad spectrum of properties, including regulation of iron homeostasis, host defense against a broad range of microbial infections, anti-inflammatory activity, regulation of cellular growth and differentiation and protection against cancer development and metastasis. Antimicrobial, antiviral, antifungal and antiparasitic activity has been found for this protein and its peptides. Alternatively spliced transcript variants encoding different isoforms have been found for this gene.
基因ID	4057
基因名	LTF
Swiss	P02788
别名	LTF;GIG12;HEL110;HLF2;LF

产品验证



Western blot analysis of Lactoferrin expressed in Rat lung using Lactoferrin Rabbit mAb at 1:1000. Secondary antibody: HRP Goat Anti-Rabbit IgG (H+L) at 1:5000. Lysates/proteins: 30ug per lane. Blocking buffer: 5% non-fat dry milk in TBST. Detection: ECL Enhanced Kit. Exposure time: 120s.

实验步骤

访问官网浏览详情: www.ablybio.cn